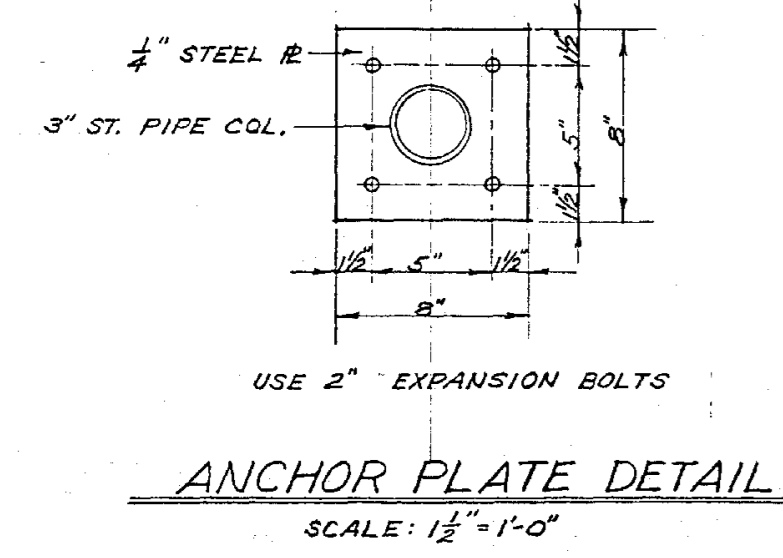


PLAN

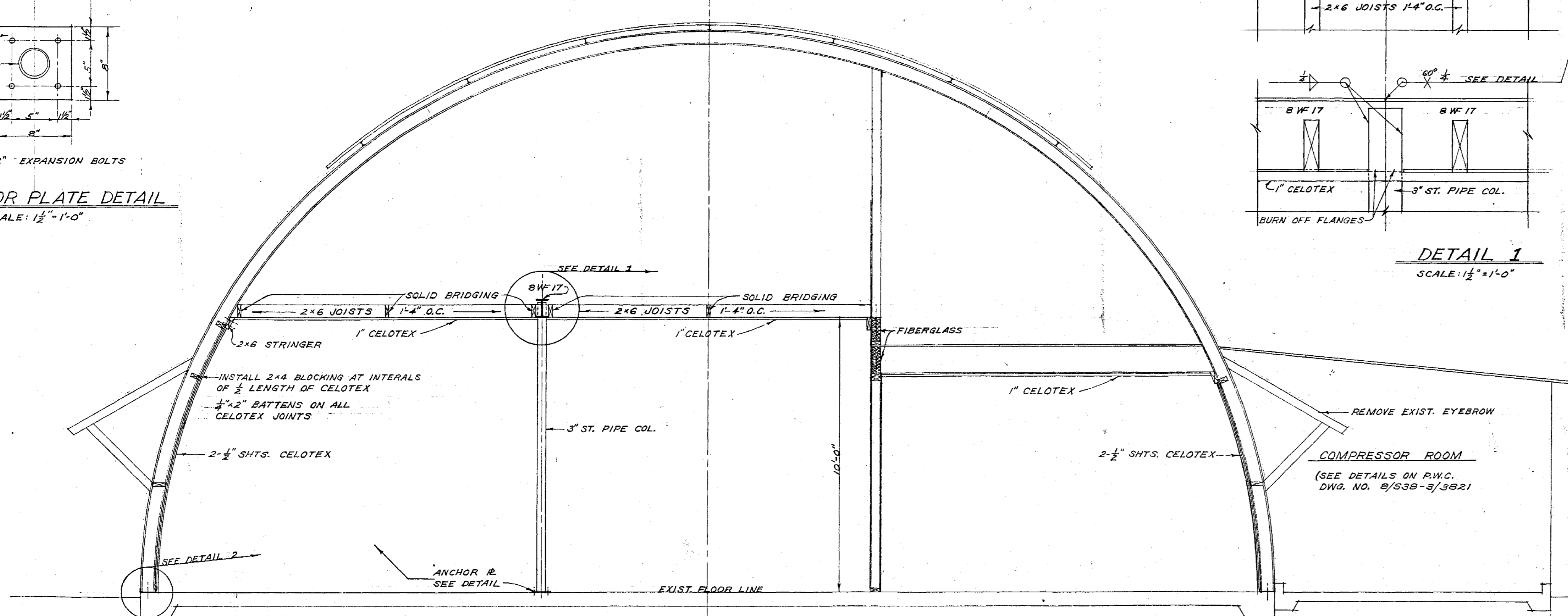
SCALE: 1/8" = 1'-0"

NOTE: INSULATE CEILING AND END WALLS WITH ONE 1" LAYER CELOTEX & SIDE WALLS WITH TWO 1/2" LAYERS CELOTEX.



ANCHOR PLATE DETAIL

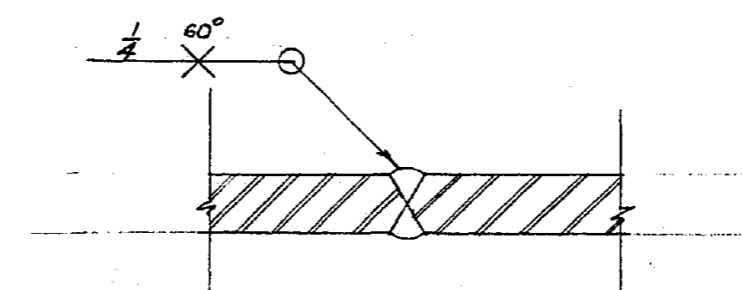
SCALE: 1/2" = 1'-0"



SECTION "A-A"

SCALE: 3/8" = 1'-0"

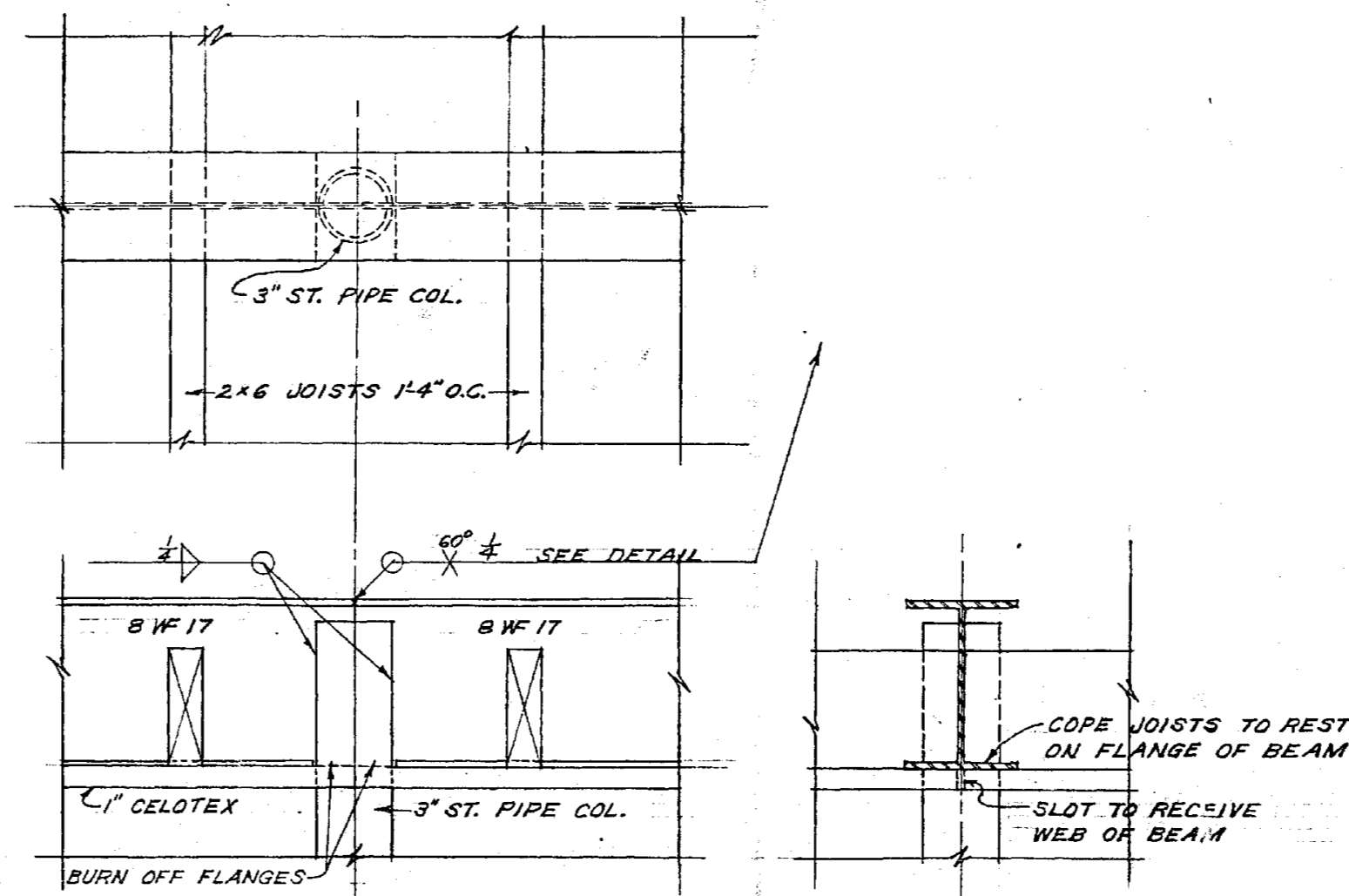
NOTE: REMOVE EXIST. EYEBROWS AND COVER OPENINGS WITH CORR. SHT. MTL.



TYPICAL SECTION THRU BEAM SPLICE

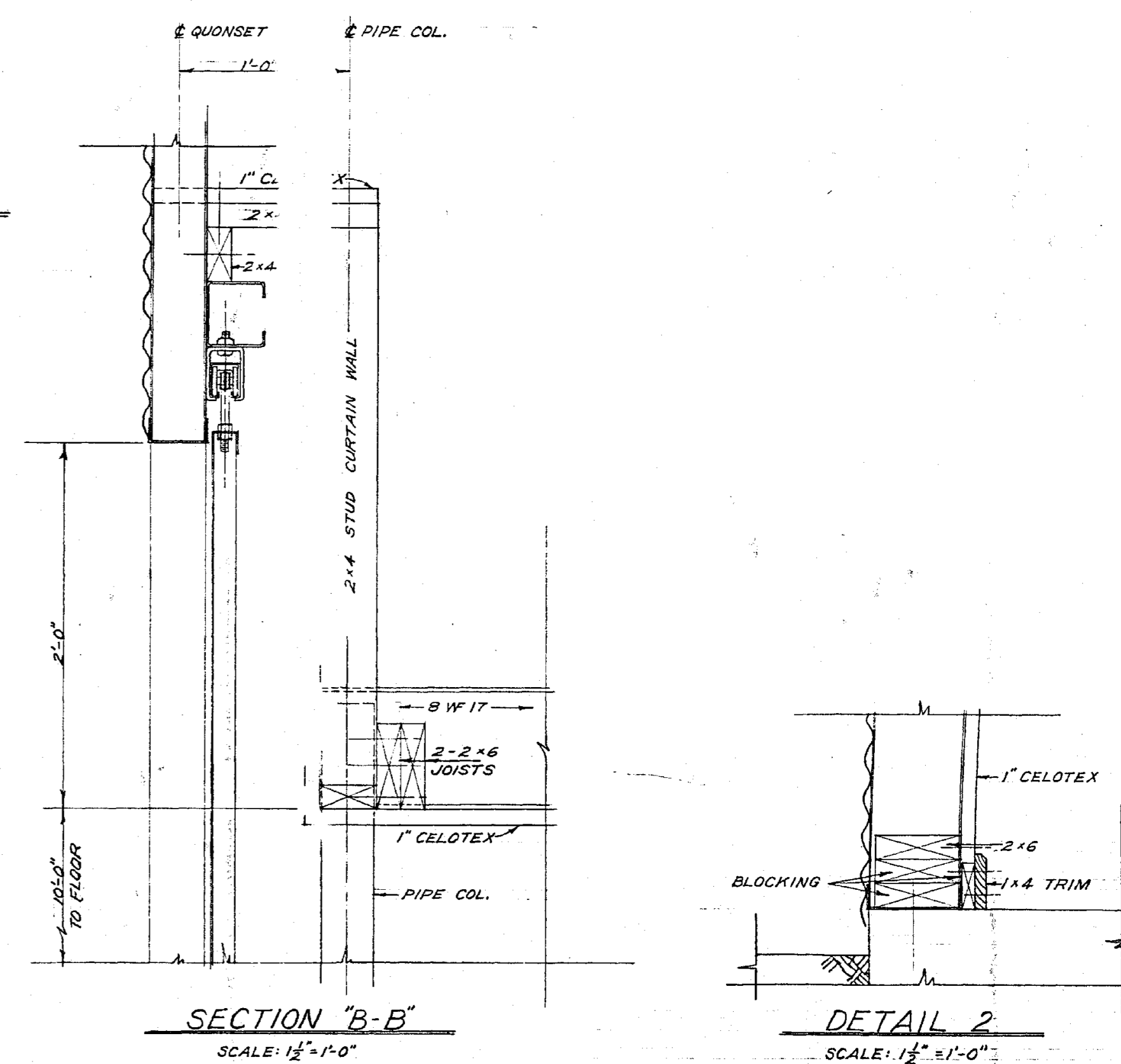
SCALE: FULL SIZE

NOTE: MAKE SPLICES APPROX. AT 1/3 POINTS OF SPANS



DETAIL 1

SCALE: 1/2" = 1'-0"

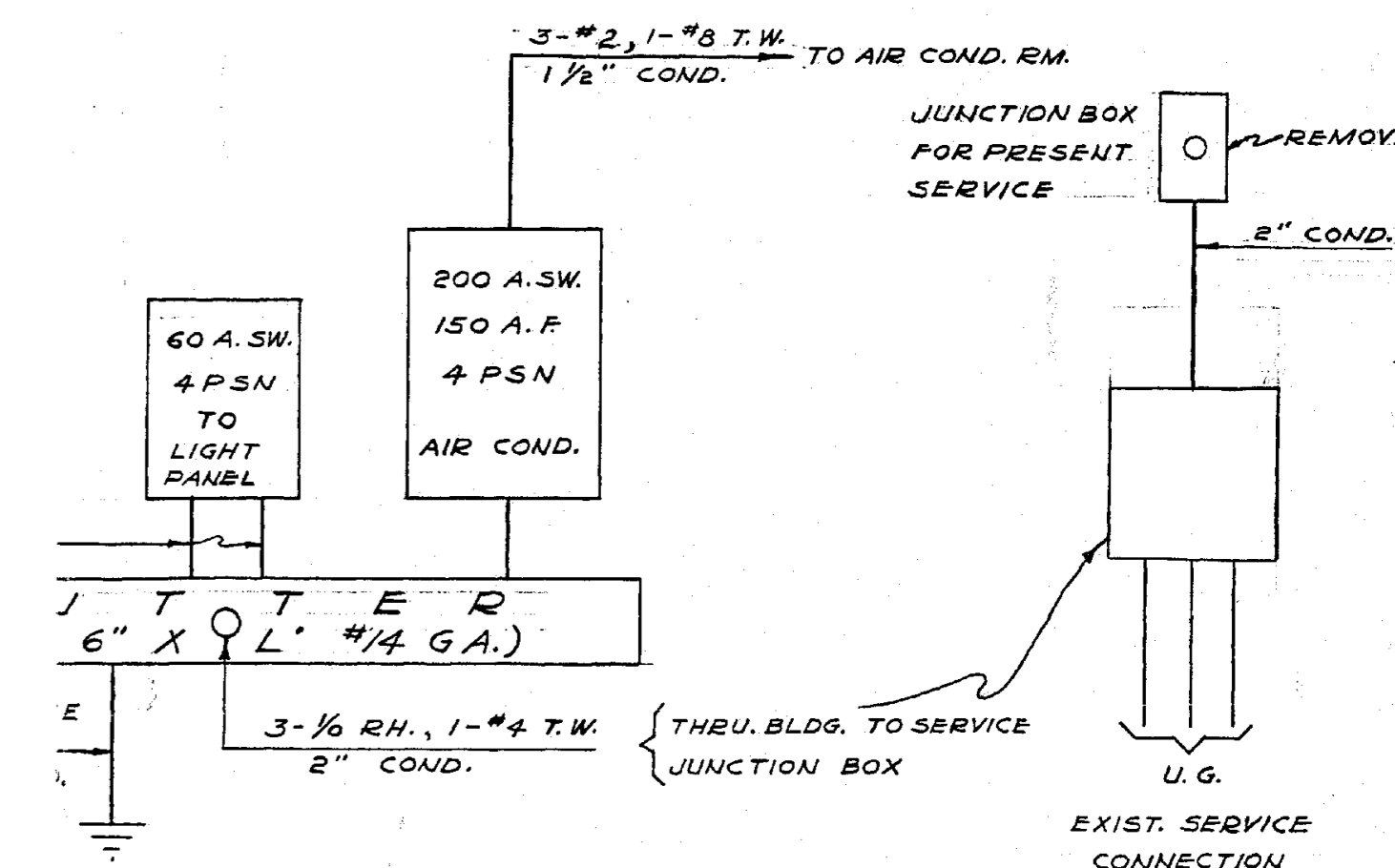


SECTION "B-B"

SCALE: 1/2" = 1'-0"

DETAIL 2

SCALE: 1/2" = 1'-0"



SCHEMATIC - MAIN PANEL

- REVISIONS:
- SEE P.W.C. DRAWING # 8/538-3/3821 FOR SCHEMATIC PLAN OF AIR CONDITIONING ROOM AND CONTROL CIRCUIT, MAG. STARTER SPECIFICATIONS, NOTES, LEGEND, ETC. ()
 - TWO ROWS OF BAKELITE LAMP HOLDERS & 1 ROW OF R.L.M. FIXTURES TO BE REMOVED.
 - THREE ROWS OF BAKELITE LAMP HOLDERS TO BE INSTALLED ON RUNNING EARDS ON NEW CEILING, SPOTTED BETWEEN STORAGE BINS.

INDEX	REVISION	DATE	APPD.	DESCRIPTION	BY
7210 - M - SHT. 1	7-8-53	JRM		ADDITIONAL STARTER FOR EVAP CONDENSER	JTB
9822 - S & E - SHT. 2					
7211 - M - SHT. 3					

PWC DRAWING NO. 8/538-3/3823	U.S. NAVAL BASE MARIANAS GUAM, M. I.
PUBLIC WORKS CENTER	
DRAWN BY - SARAH'S S-COREY USN	
CHKD. _____	
SUPPLY _____	
DES. ENG. _____	
BR. MGR. _____	
DIV. DIR. MATTHEWS	
P&E NO. 3391	APPROVED _____ OFFICER IN CHARGE
P&E 7-9-53	SATISFACTORY TO: SRE
P&E 4-3-53	ACTIVITY
DATE NO.	SIGNATURE H.S. DUSHLER
ISSUES	DATE 4-1-53 TITLE SHIP SUIT

SCALE: AS NOTED	SPEC.
SHEET NO. 4 OF 4	
YARDS & DOCK'S	DRAWING NO.

34"

22"

17"

11"

8.5"

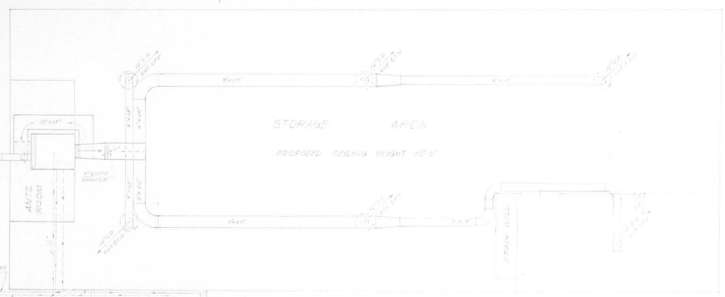
8.5"

11"

17"

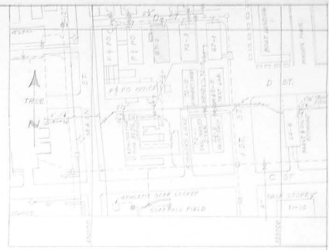
22"

34"

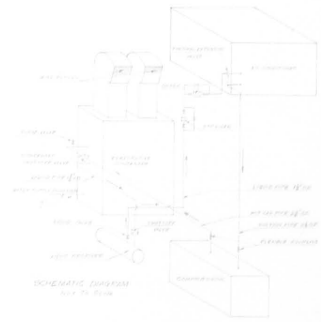


LEGEND

- Drive Compartment
- Utility Air
- Airline Refrigeration Unit
- Air Distribution to Supply Room
- Storage
- Air Conditioning in Warehouse 1000000
- Exhaustion Pipe
- Fire Alarm
- Telephone
- Elevator
- Air Flow Direction



LOCATION PLAN Scale: 1/4" = 10' 0"



SCHEMATIC DIAGRAM Scale: 1/4" = 10' 0"

PERMANENT DIMENSIONS

1. Overall length of main duct: 100' 0"

2. Overall width of main duct: 10' 0"

3. Overall height of main duct: 10' 0"

4. Overall length of branch duct: 50' 0"

5. Overall width of branch duct: 5' 0"

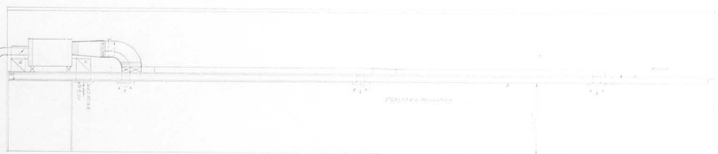
6. Overall height of branch duct: 5' 0"

PERMANENT DIMENSIONS

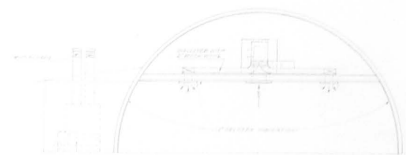
NO.	DESCRIPTION	LENGTH	WIDTH	HEIGHT
1	Main Duct	100' 0"	10' 0"	10' 0"
2	Branch Duct	50' 0"	5' 0"	5' 0"

PERMANENT DIMENSIONS

NO.	DESCRIPTION	LENGTH	WIDTH	HEIGHT
1	Main Duct	100' 0"	10' 0"	10' 0"
2	Branch Duct	50' 0"	5' 0"	5' 0"



SECTION A-A Scale: 1/4" = 10' 0"



SECTION B-B Scale: 1/4" = 10' 0"

CONSTRUCTION NOTES

1. Equipment for handling this system is to be installed in the main duct.
2. Duct insulation shall be installed in the main duct.
3. Main ducts shall be supported by duct supports.
4. Branch ducts shall be supported by duct supports.
5. All ducts shall be supported by duct supports.
6. All ducts shall be supported by duct supports.
7. All ducts shall be supported by duct supports.
8. All ducts shall be supported by duct supports.

INDEX	NO.	DESCRIPTION	DATE
1	1	1	1
2	2	2	2
3	3	3	3
4	4	4	4
5	5	5	5
6	6	6	6
7	7	7	7
8	8	8	8
9	9	9	9
10	10	10	10
11	11	11	11
12	12	12	12
13	13	13	13
14	14	14	14
15	15	15	15
16	16	16	16
17	17	17	17
18	18	18	18
19	19	19	19
20	20	20	20
21	21	21	21
22	22	22	22
23	23	23	23
24	24	24	24
25	25	25	25
26	26	26	26
27	27	27	27
28	28	28	28
29	29	29	29
30	30	30	30
31	31	31	31
32	32	32	32
33	33	33	33
34	34	34	34
35	35	35	35
36	36	36	36
37	37	37	37
38	38	38	38
39	39	39	39
40	40	40	40
41	41	41	41
42	42	42	42
43	43	43	43
44	44	44	44
45	45	45	45
46	46	46	46
47	47	47	47
48	48	48	48
49	49	49	49
50	50	50	50
51	51	51	51
52	52	52	52
53	53	53	53
54	54	54	54
55	55	55	55
56	56	56	56
57	57	57	57
58	58	58	58
59	59	59	59
60	60	60	60
61	61	61	61
62	62	62	62
63	63	63	63
64	64	64	64
65	65	65	65
66	66	66	66
67	67	67	67
68	68	68	68
69	69	69	69
70	70	70	70
71	71	71	71
72	72	72	72
73	73	73	73
74	74	74	74
75	75	75	75
76	76	76	76
77	77	77	77
78	78	78	78
79	79	79	79
80	80	80	80
81	81	81	81
82	82	82	82
83	83	83	83
84	84	84	84
85	85	85	85
86	86	86	86
87	87	87	87
88	88	88	88
89	89	89	89
90	90	90	90
91	91	91	91
92	92	92	92
93	93	93	93
94	94	94	94
95	95	95	95
96	96	96	96
97	97	97	97
98	98	98	98
99	99	99	99
100	100	100	100

U. S. NAVAL BASE MARIANAS GUAM, R. I.
PUBLIC WORKS CENTER
 BRE ELECTRONIC SHOP STORE
 BLDG. 67-2
AIR CONDITIONING
 PLAN & DETAILS
 M. J. [Signature]

3391
 DATE: 4/21/52
 DRAWN BY: [Signature]
 CHECKED BY: [Signature]
 APPROVED BY: [Signature]
 TITLE: AS WORKED
 SCALE: AS SHOWN
 SHEET NO. 1 OF 1
 DATE: 4/21/52