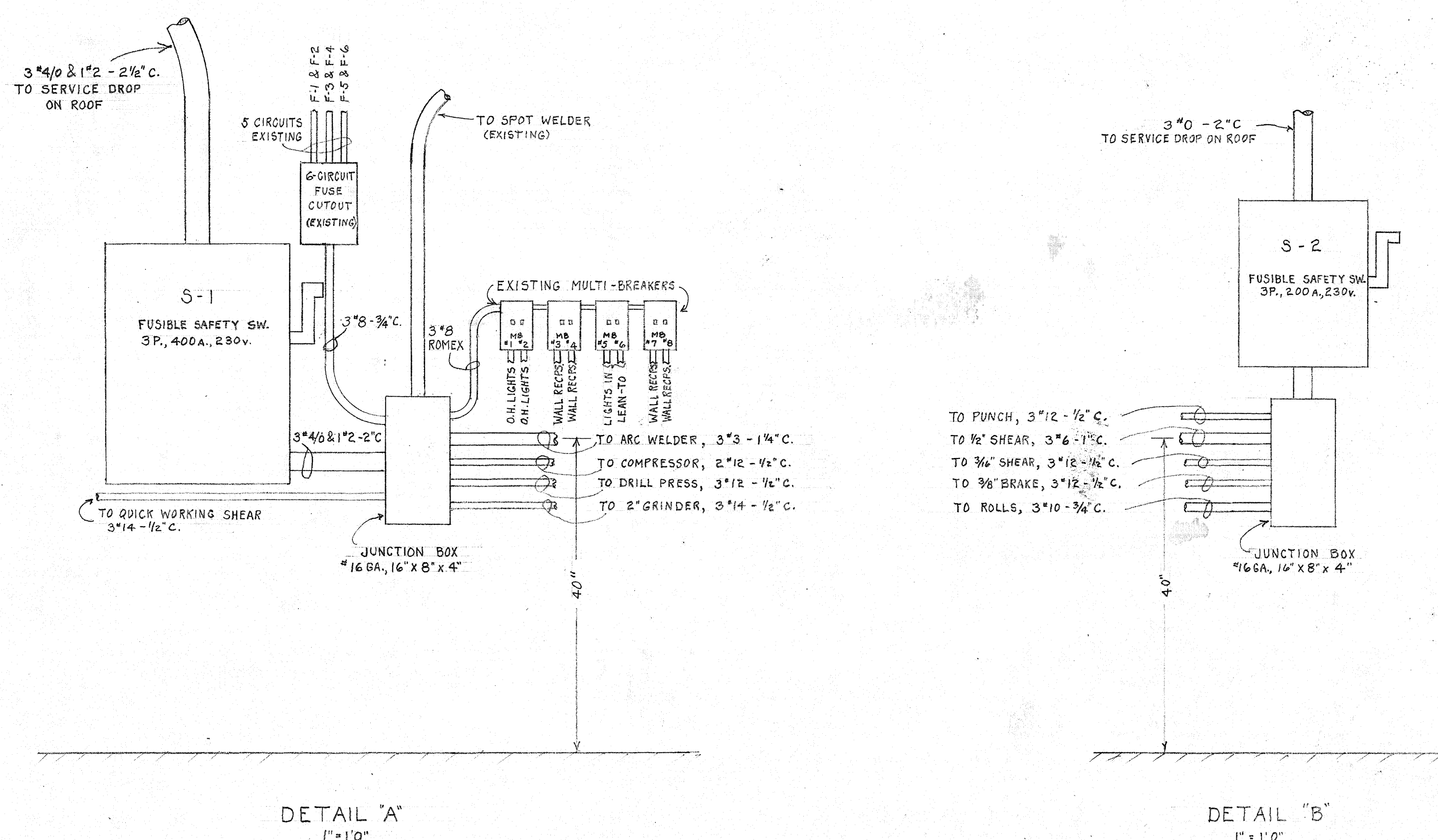


PLAN
1/8"=1'0"



DETAIL "A"
1"=10"

DETAIL "B"
1"=1'0"

LEGEND

- CEILING LIGHT - 200w.
- ② DROP LIGHT - 200w. 7 1/2" TO BOTTOM OF REFLECTOR.
- ③ SPICE BOX ON FIXTURE. 7 1/2" TO BOTTOM OF ALL FIXTURES EXCEPT 1500w. UNITS WHICH ARE TO BE 9 1/2".
- ④ DUPLEX RECEPTACLE - MOUNT 18".
- ⑤ WALL SWITCH - MOUNT 48".
- PS PULL SWITCH.
- OVERHEAD LIGHTING FIXTURE.
- ⊠ LIGHTING PANEL.
- MOTOR CONTROLLER.
- ⊞ SAFETY SWITCH.
- EXPOSED CONDUIT OR CABLE RUN.
- - - CONDUIT IN FLOOR SLAB.

NOTES

- DISCONTINUE OVERHEAD BUS DOWN CENTER OF SHOP.
- REMOVE DROP LIGHTS ALONG NORTHEAST WALL.
- RETAIN EXISTING WALL RECEPTACLES (NOT SHOWN), PLUS THREE ADDITIONAL AS INDICATED.
- ROMEX CABLE MAY BE SUBSTITUTED FOR CONDUIT WHERE IT WILL NOT BE SUBJECT TO MECHANICAL INJURY.
- FIXTURES: ONE 230v. FLUORESCENT UNIT, ONE 400w. STRIP LIGHT, AND FIVE 1500w. STRIP LIGHTS AVAILABLE IN THIS SHOP. CONVERT TWO 1500w. UNITS TO USE 3-200w. LAMPS, AND BUILD FOUR MORE SIMILAR UNITS FOR 3-200w. LAMPS.
- CHECK ALL MOTORS & STARTERS FOR PROPER CONNECTION FOR 220v.

FUSE SIZES FOR SAFETY SWITCHES

MAIN SWITCHES —	
S-1	300 A.
S-2	200 A.
MOTOR BRANCH CIRCUIT SWITCHES —	
1/2" SHEAR	12.5 A.
3/8" SHEAR	4.5 A.
3/8" BRAKE	4.5 A.
POWER ROLLS	4.5 A.
PUNCH & SLITTING SHEAR	4.5 A.
ARC WELDER	150 A.
COMPRESSOR	30 A.
DRILL PRESS	NONE
SPOT WELDER	80 A.
2" GRINDER	20 A.
QUICK WORKING SHEAR	20 A.

REV.	DATE	BRIEF	BY	APPR.
DRAWN BY	J. Brangle 6/14/47	ISLAND PUBLIC WORKS, GUAM, M.I.		
CHP. DFTMN.		I.P.W. SHEET METAL SHOP		
IN CHARGE		LIGHT & POWER CIRCUITS		
SHEET 1 OF 1		LAYOUT & DETAILS		
ELECTRICAL				
P.W. DWG No.	179			
M	6/17/47 3			
TO DATE NO.				
ISSUES				

APPROVED 16 June 1947
R. E. ...
 PUBLIC WORKS OFFICER

15IN26-5/4284