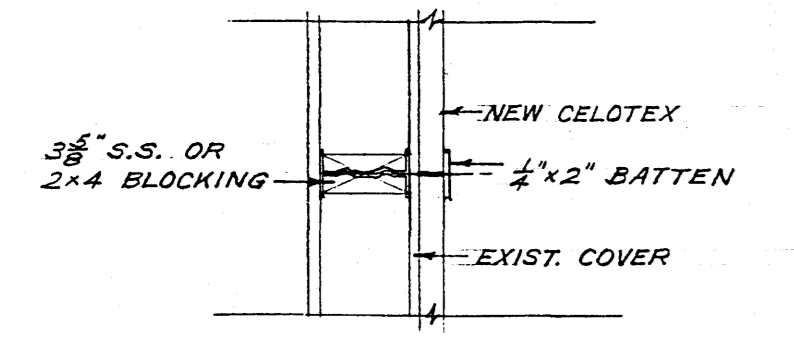
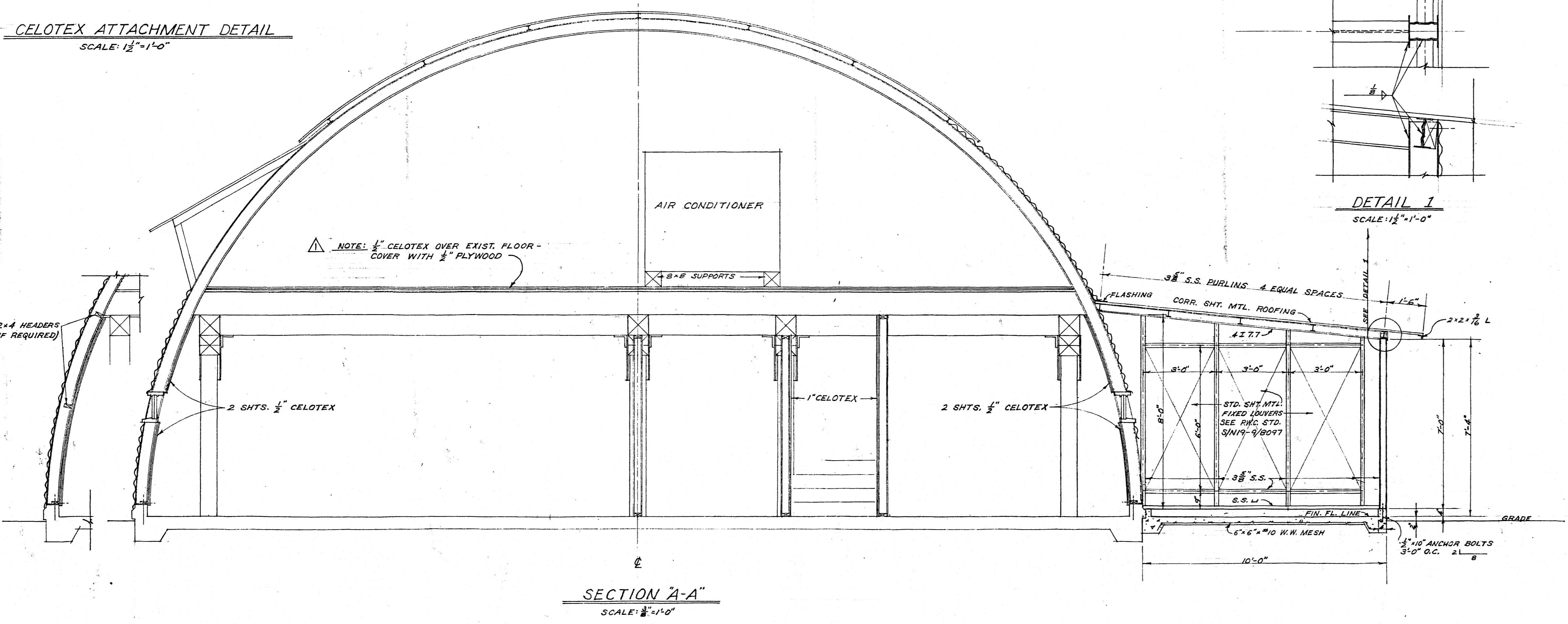


PLAN
SCALE: 1/8" = 1'-0"

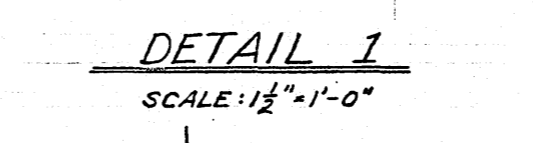
NOTE: INSULATE INSIDE SURFACE OF ALL EXTERIOR WALLS WITH ONE 1" OR TWO 1/2" LAYERS CELOTEX AS INDICATED



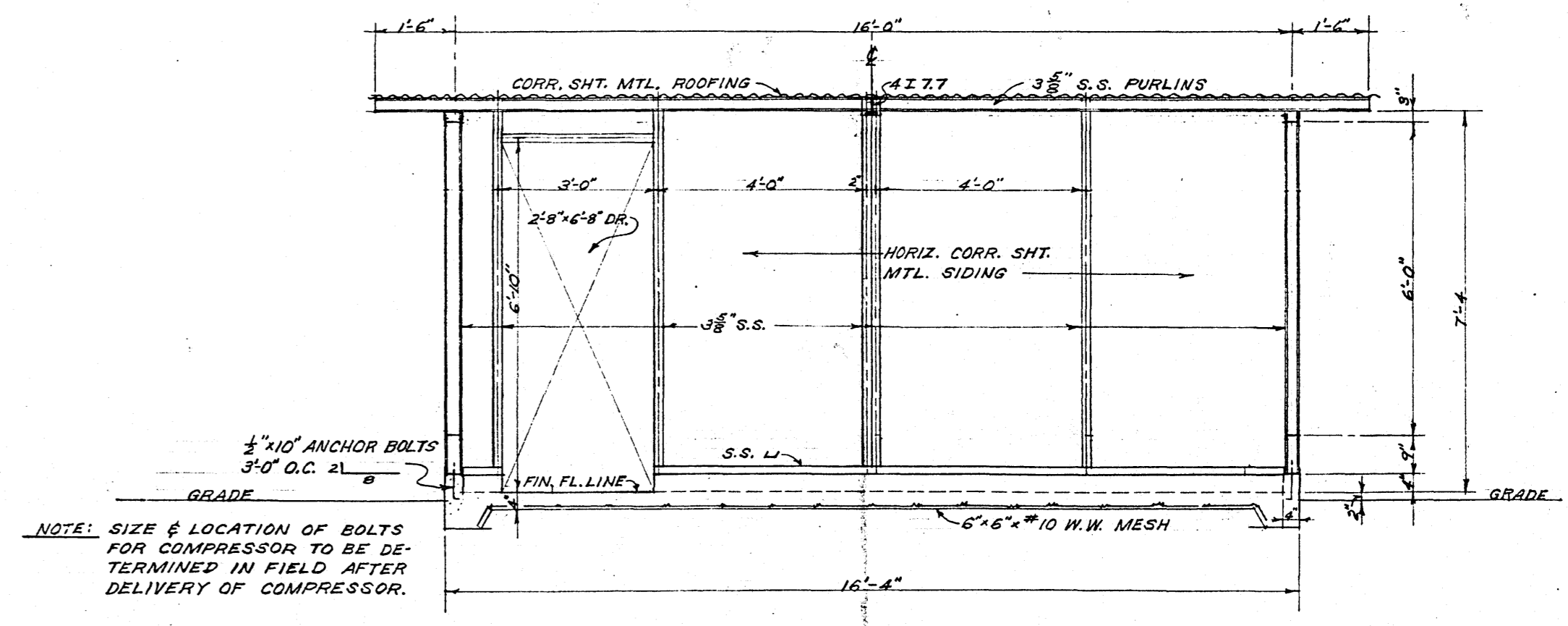
CELOTEX ATTACHMENT DETAIL
SCALE: 1/2" = 1'-0"



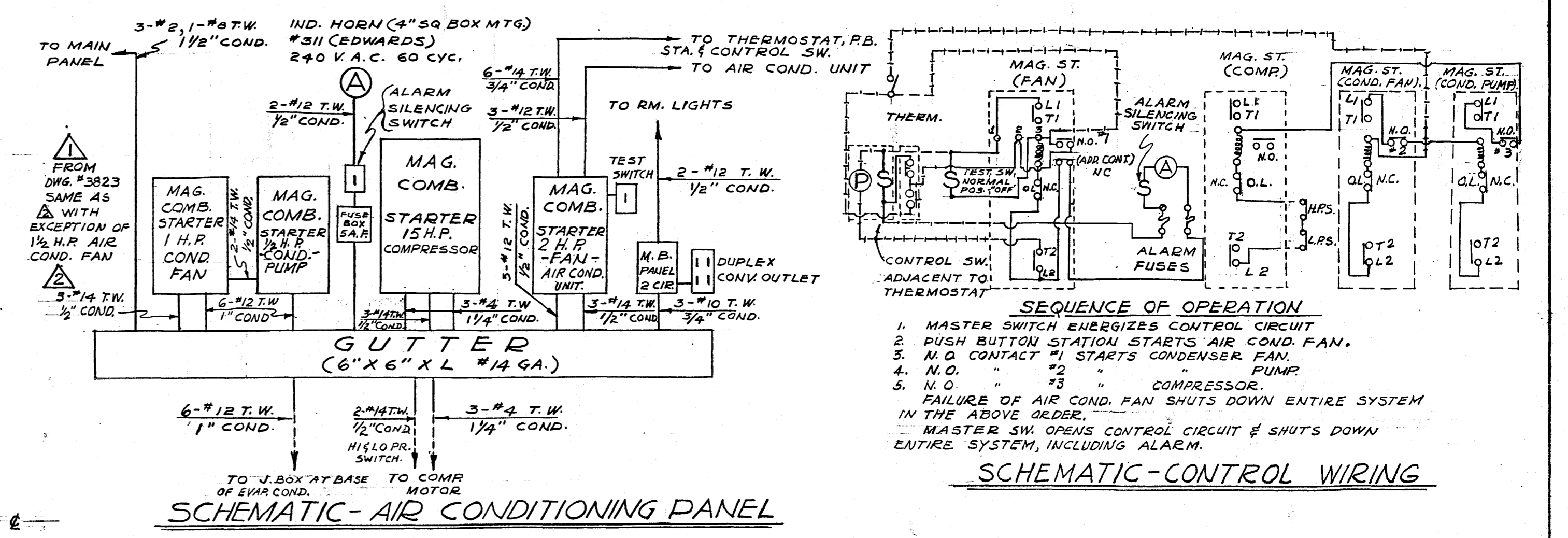
SECTION "A-A"
SCALE: 1/8" = 1'-0"



DETAIL 1
SCALE: 1/2" = 1'-0"



WALL FRAMING AT "B-B"
SCALE: 1/8" = 1'-0"



SCHEMATIC - AIR CONDITIONING PANEL

SEQUENCE OF OPERATION
1. MASTER SWITCH ENERGIZES CONTROL CIRCUIT
2. PUSH BUTTON STATION STARTS AIR COND. FAN.
3. N.O. CONTACT "1" STARTS CONDENSER FAN.
4. N.O. "2" " COMPRESSOR.
5. N.O. "3" " FAILURE OF AIR COND. FAN SHUTS DOWN ENTIRE SYSTEM IN THE ABOVE ORDER.
6. MASTER SW. OPENS CONTROL CIRCUIT & SHUTS DOWN ENTIRE SYSTEM, INCLUDING ALARM.

SCHEMATIC - CONTROL WIRING

G.E. MAGNETIC COMB. MOTOR STARTER

CR7008 - FORM B1013A REQUIREMENT
TYPE 1 CASE, SIZE 0, 2 HP 3-STARTERS 1-1/2 HP, 1-2 HP
60 CYC. 3 PH. 208 VOLT 1-WITH EXTRANORMALLY CLOSED INTERLOCK
CIRC. BRK. TRIP 15 A.
2 HEATERS B1D540 (239A - 262A)
2 " B1D549 (42A - 46A)
2 " B1D544 (57A - 62A)
CR7008 - FORM B1013A REQUIREMENT
TYPE 1 CASE, SIZE 2, 15 HP
60 CYC. 3 PH. 208 VOLT
CIRC. BRK. TRIP 100 A.
2 HEATER COILS B1D225 (430A - 457A)
REQUIREMENT - 1-STARTER

LEGEND

- PANEL
- INCANDESCENT LIGHT R.L.M. DOME 150W.
- ⊞ TOGGLE SWITCH
- ⊞ COMBINATION SWITCH & PILOT LIGHT (GREEN). GRAYBAR CAT. #101 7739 PAGE 497.
- ⊞ THERMOSTAT EQUAL TO MINNEAPOLIS-HONEYWELL CAT. #48
- ⊞ ALARM HORN
- N.C. NORMALLY CLOSED CONTACT
- N.O. " OPEN "
- WIRING EXTERNAL TO AIR COND. PANEL CONDUIT IMBEDDED IN CONCRETE
- 2" TWO PUSH BUTTON STATION CR 2943-M104 PAGE 1077 GRAYBAR CAT. #104

NOTES

1. ALL WORK TO BE DONE IN ACCORDANCE WITH B. X.D., 99F, AND THE NATIONAL ELECTRICAL CODE.
2. FOUR EXISTING A.C. UNITS AND WIRING TO BE REMOVED.
3. GUTTERS TO BE PAINTED INSIDE.
4. MAIN PANEL GUTTER TO BE OF SUFFICIENT LENGTH TO ACCOMMODATE (FUTURE) DISCONNECT SWITCHES AND LIGHTING PANEL. USE EXIST. MAIN SW. FOR AIR COND. PANELS TO BE 3/4" PLYWOOD.
5. CONTROL WIRING TO BE 1/4" T.W.

INDEX	REVISION	DATE	APPD.	DESCRIPTION	BR. MGR. BY
7209 - M - SHT. 1	1	7-8-53	A.P.M.	ADDITIONAL STARTER FOR EXHA. CONDENSER.	M.B.
	2	8-7-53	A.P.M.	CHANGE METHOD OF INSULATING CEILING & STAIRWELL REMOVE & REPLACE WORKBENCHES	W.P.S. C.C.C.
		8/5/53-3/30/21		U.S. NAVAL BASE MARIANAS	GUAM, M.I.
				PUBLIC WORKS CENTER	
				SRF OPTICAL REPAIR SHOP BLDG. 31-10	
				AIR CONDITIONING	
				PLAN, SECTION & SCHEMATICS	
				STRUCTURAL & ELECTRICAL	
				APPROVED	4/2/53
				OFFICER IN CHARGE	DATE
				3458	
				SATISFACTORY TO	SCALE: AS NOTED SPEC.
				ACTIVITY	SHEET NO. 2 OF 2
				SIGNATURE	YARDS & DOCKS
				DATE 8-1-53	DRAWING NO.
				TITLE SHOP SWP	