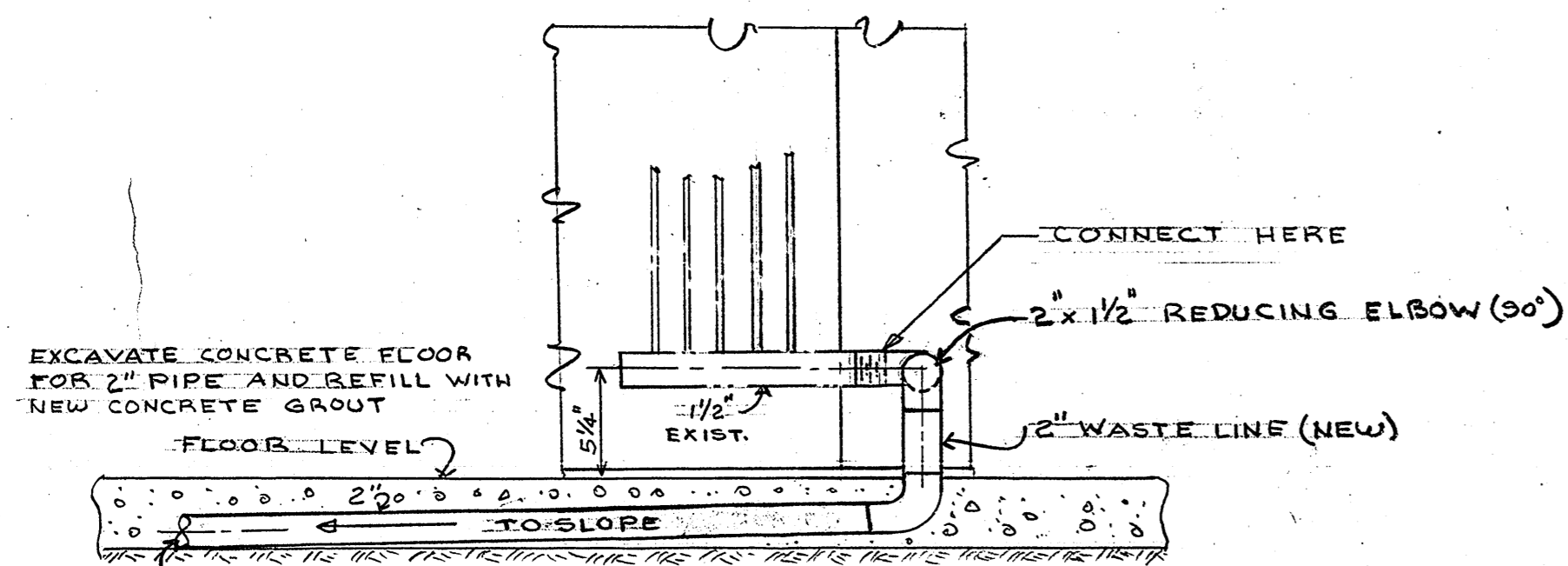
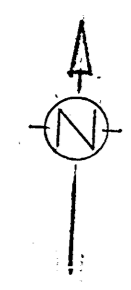
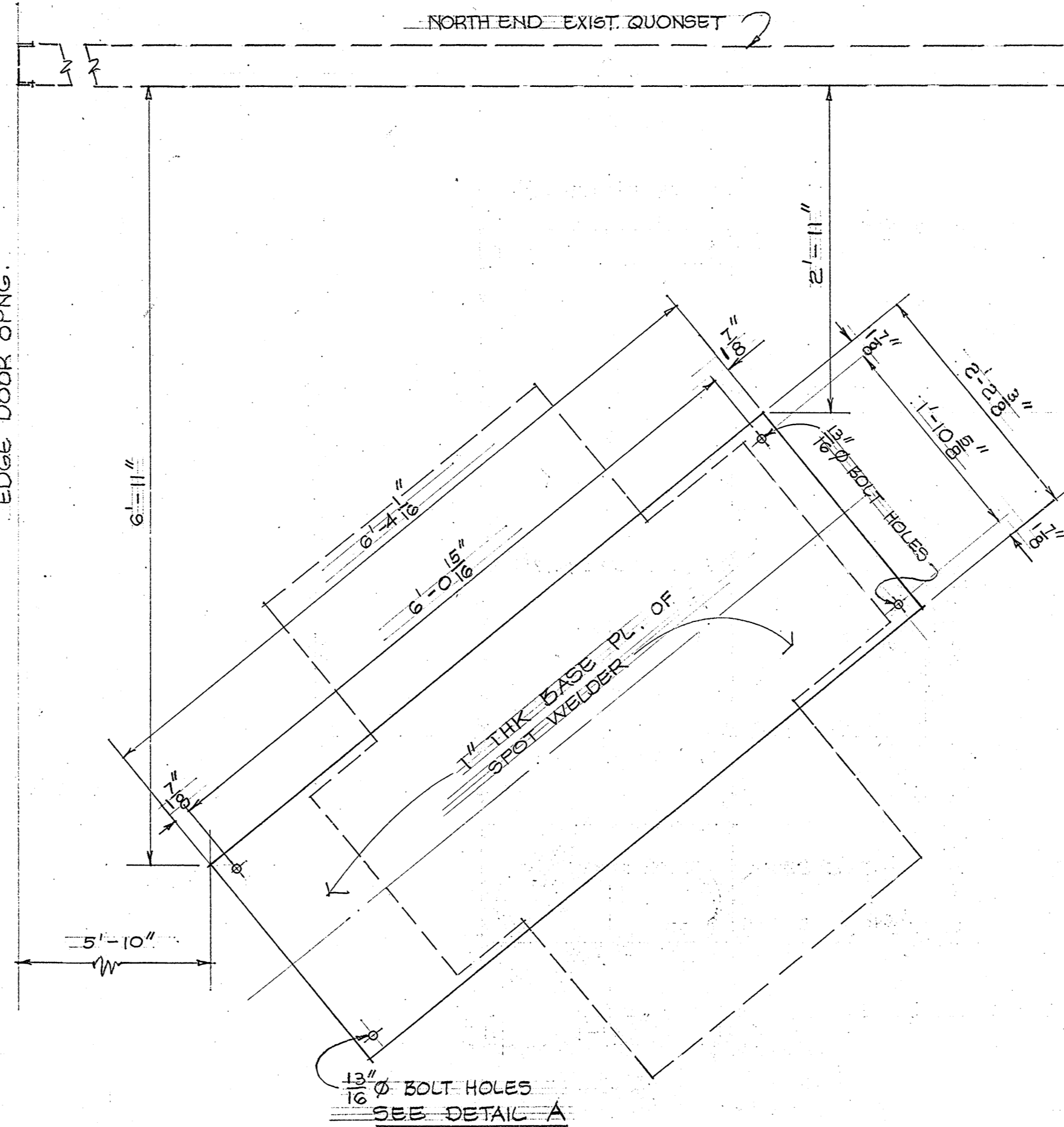


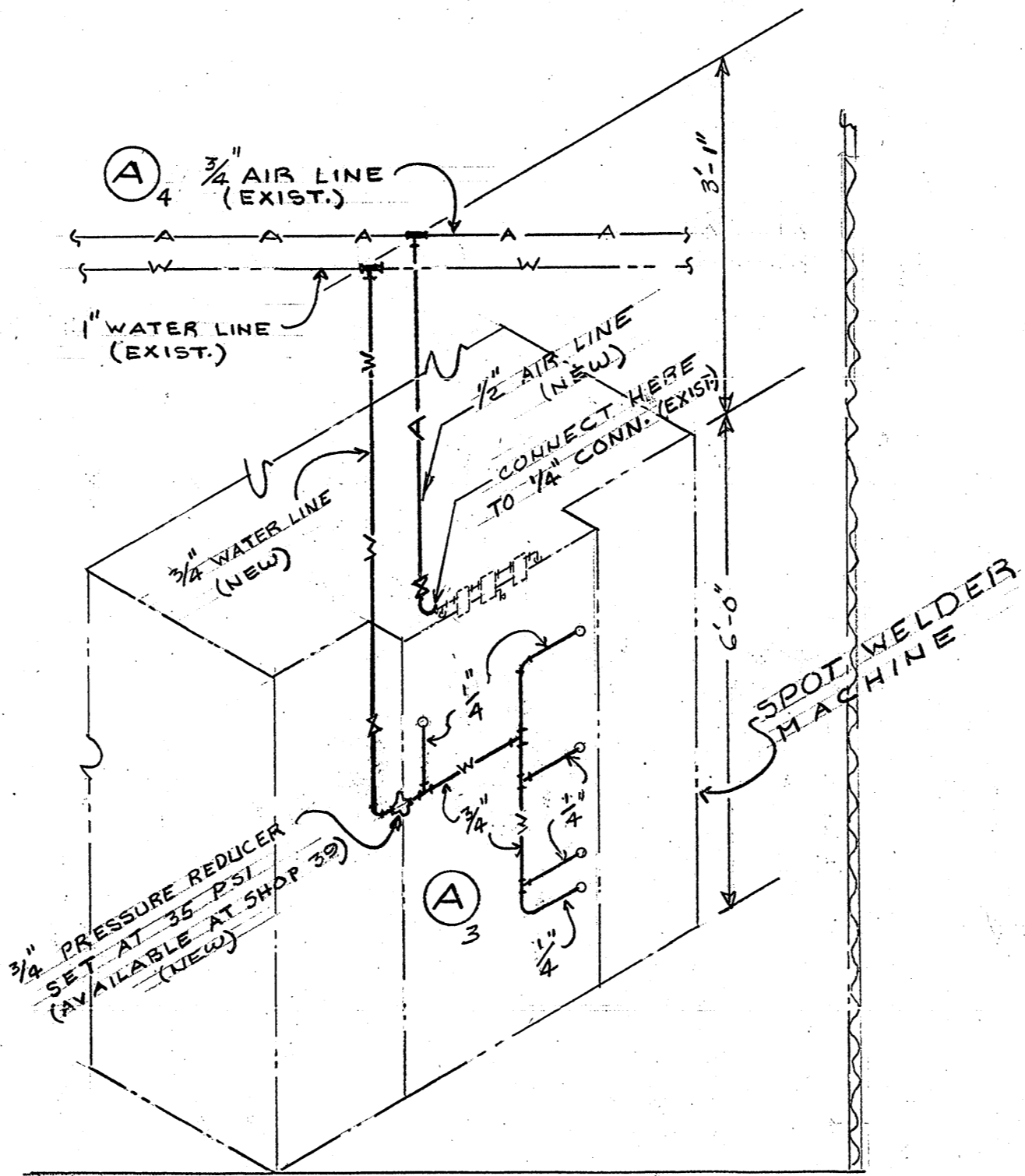
FLOOR PLAN
SCALE: 1/8" = 1'-0"



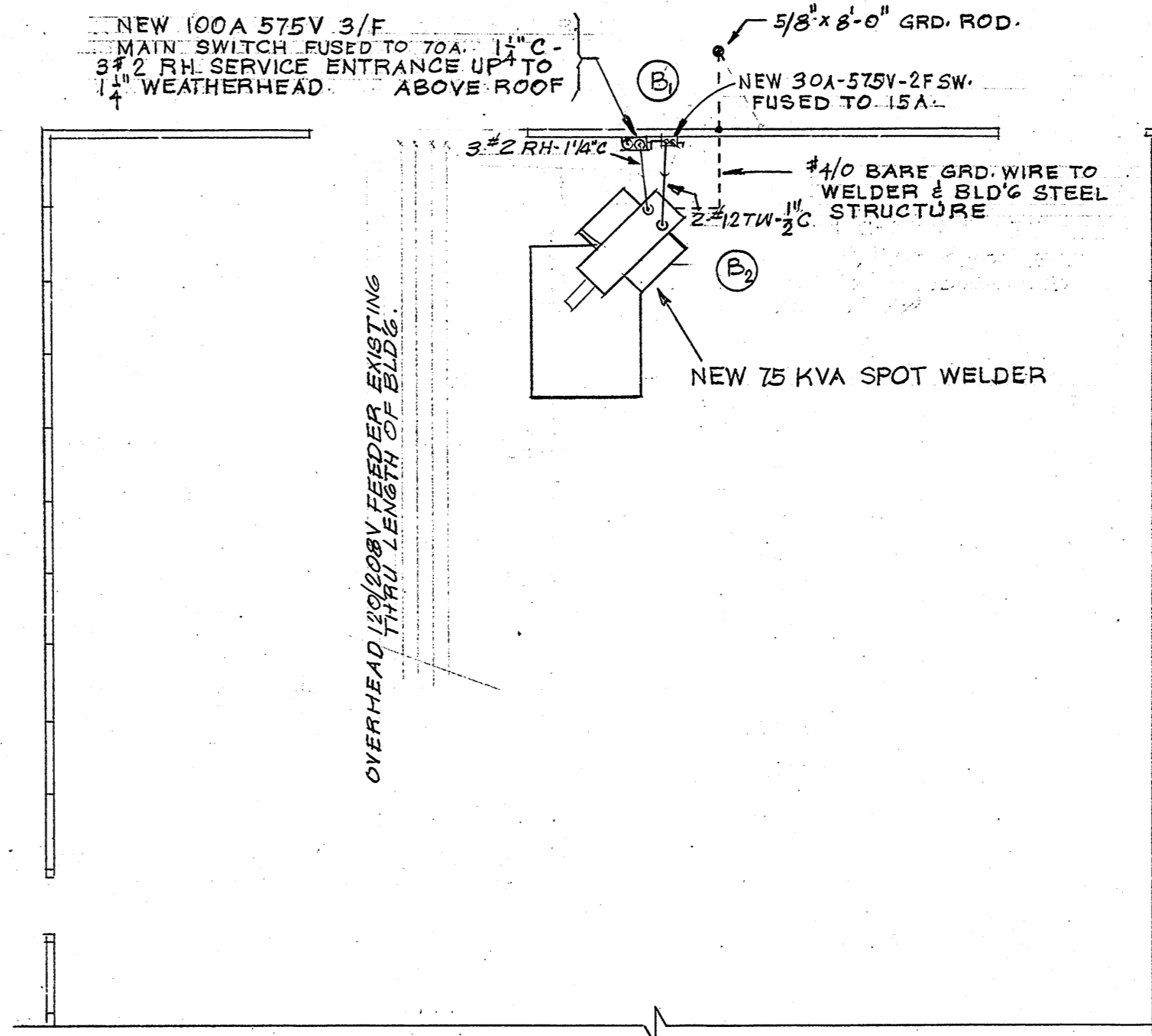
DET. C
SCALE - NONE



FOUNDATION PLAN
SCALE: 1" = 1'-0"

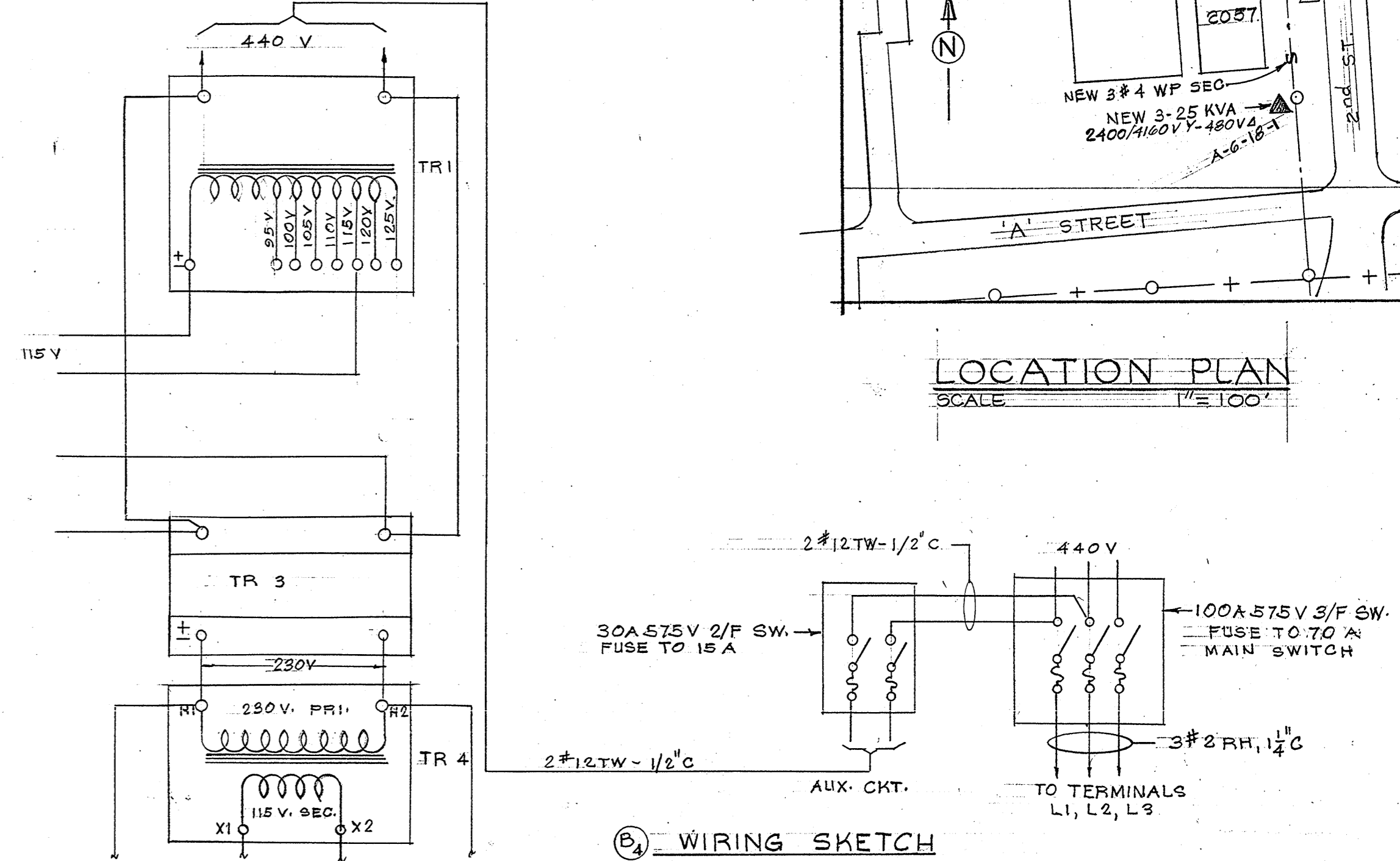


DET. B
SCALE - NONE

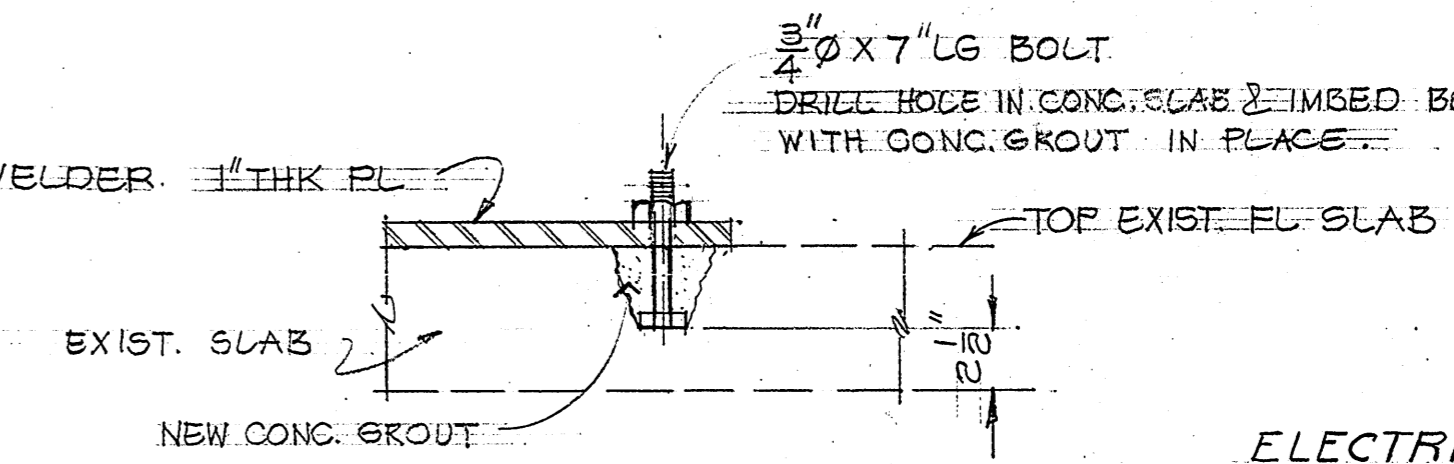


PART PLAN
NORTH END OF BLDG (ELECTRICAL)
SCALE: 1/8" = 1'-0"

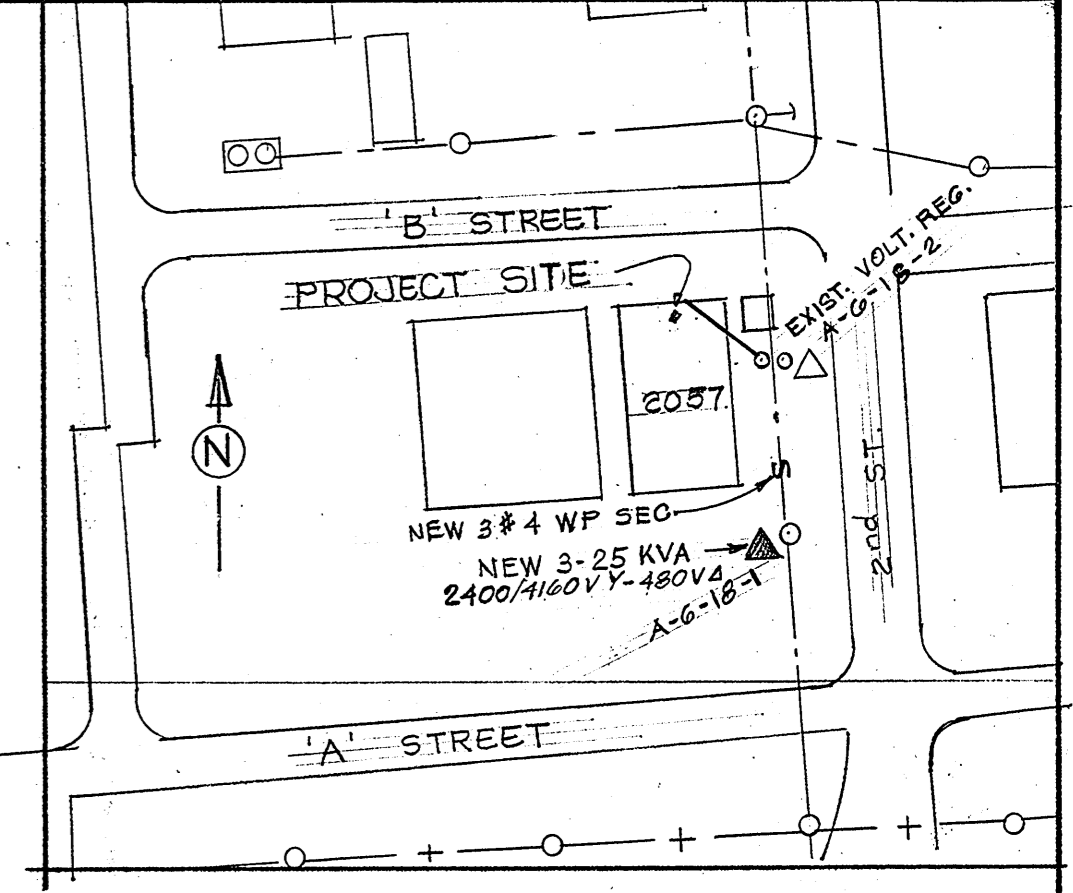
- LEGEND**
- A — NEW AIR LINE
 - W — NEW WATER LINE
 - X — GATE VALVE
 - — NEW WASTE LINE



WIRING SKETCH



TYP. DET. A
SCALE: 1/8" = 1'-0"



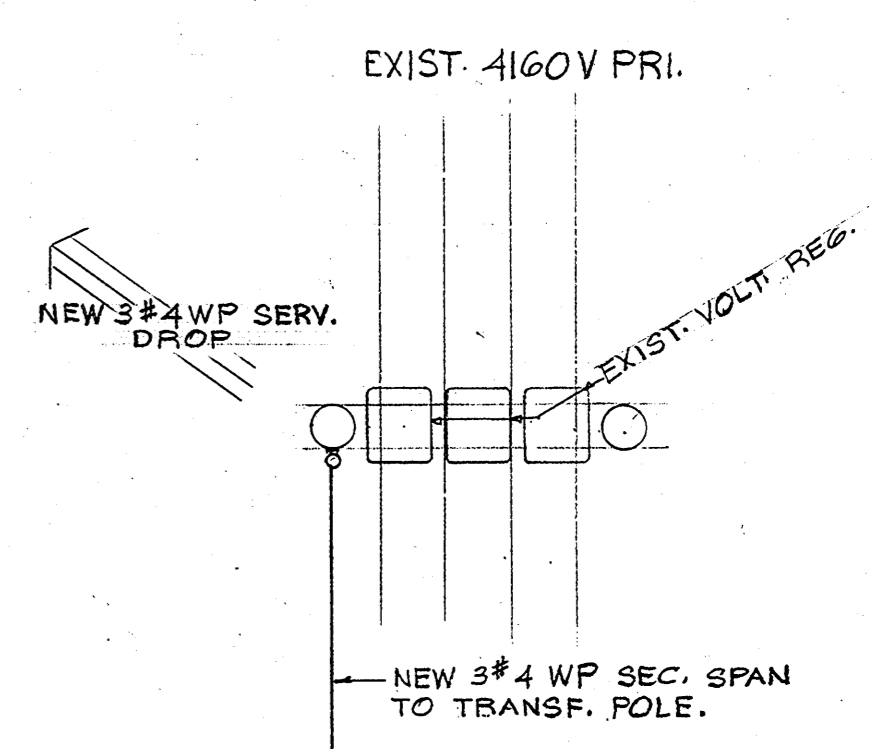
LOCATION PLAN
SCALE: 1" = 100'

ELECTRICAL NOTES:

1. ALL ELECTRICAL WORK SHALL BE IN ACCORDANCE WITH THE NATIONAL ELECTRICAL CODE.
2. CONNECT MAIN FEED TO TERMINALS L1, L2, & L3. CHECK FOR PHASE ROTATION AND MAKE PHASE ROTATION L1, L2, L3.
3. CONNECT THE 440V AUX. CIRCUIT TO THE INPUT OF TRANSFORMER "TR1".
4. CHECK TRANSFORMERS "TR1", "TR3", AND "TR4" FOR PROPER CONNECTION AND VOLTAGE. SEE WIRING SKETCH THIS DRAWING.
5. FOR ADDITIONAL INFORMATION, SEE SCIACY DRAWING SERIES W-NO. E77513.

TR	VOLTAGE	TR. NUMBER	JUMPER	CONN
TR-1	220	324980	1+3, 2+4	1-4
TR-1	440	324980	2+3	1-4
TR-3	220	FP 1342	1+3, 2+4	1-4
TR-3	440	FP 1342	2+3	1-4

TRANSFORMER PRIMARY CONNECTION



- MECHANICAL NOTES:**
1. The 2" waste line shall be std. cast iron soil pipe with bell and spigot fittings. If the cast iron is not available, a std. galv. pipe sched. 40 may be substituted provided it shall be coated with bituminous coating and wrapped.
 2. All new water lines shall be std. galv. pipe, sched. 40, screw jointed fittings.
 3. New air lines shall be black steel pipe, sched. 40 screw jointed fittings.
- STRUCTURAL NOTES:**
1. Spot welder presently located in bldg. 2057 near final location shown.
 2. Verify exact final location of spot welder and bolt hole layout.
 3. Provide shims as necessary under base plate.

(B) CHANGED NOTES & WIRING. ADDED TRANSF. CONNECTION. DET. 9/14/60 JLB/PVB (A) REVISED NOTE (1) REVERSED CONNECTION OF 1" WASTE LINE. (2) CHANGED PIPE SIZE FROM 3/4" TO 1/2" AND DELETED VALVES. (3) CHG SIZE OF 1/2"			
SYMBOL	DESCRIPTION	DATE	APPROVAL
REVISIONS PWC DRAWING NO. 11344 DEPARTMENT OF THE NAVY BUREAU OF YARDS & DOCS PUBLIC WORKS CENTER, GUAM, M.I. DES. SRE GUAM, M.I. DRWN. AT3 CHK. HOBELMAN DIV. DIR. [Signature] CORR. ENGR. [Signature] DEPT. HEAD [Signature] WR. NO. A 3068 APPROVED [Signature] COMMANDING OFFICER DATE 8/12/60			
SATISFACTORY TO ACTIVITY SIGNATURE [Signature] DATE 8-1-60 TITLE [Signature]		SCALE SHEET 1 OF 1 NBY	SPEC Y & D DRAWING NO.