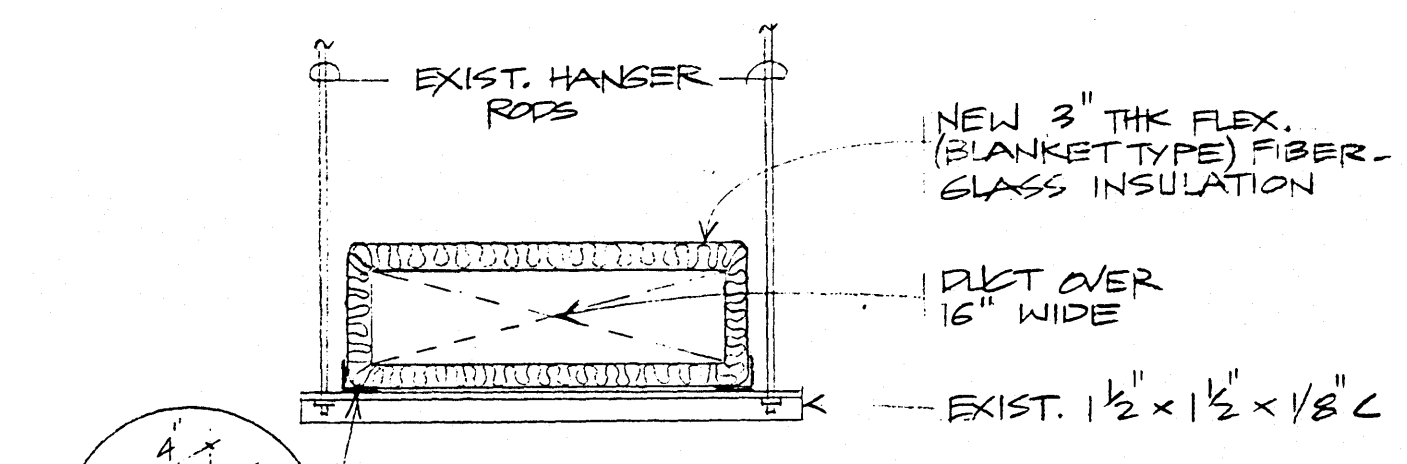


A/C DUCTWORK - PARTIAL PLAN  
SCALE: 3/32" = 1'-0"

**LEGEND:**

--- EXIST. DUCTS TO BE RE-INSULATED

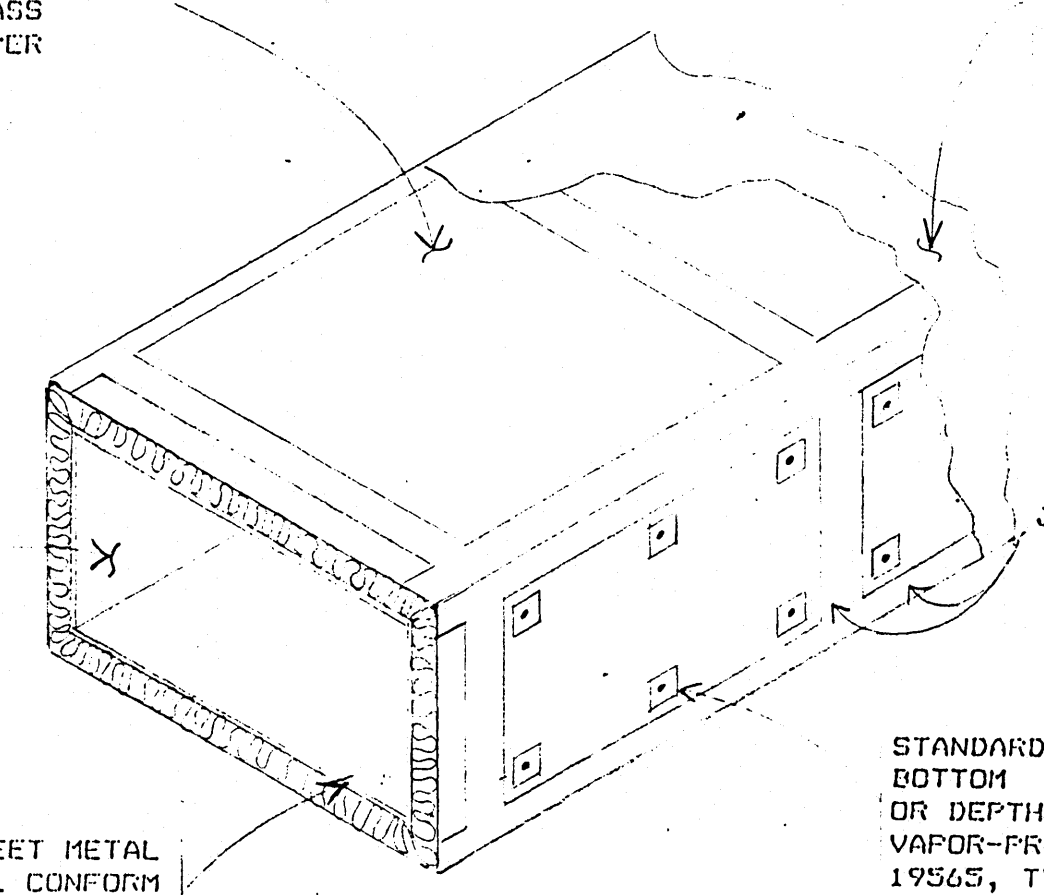
--- EXIST. DUCTS NO RE-INSULATION REQUIRED.



2 DUCT HANGERS DETAIL  
NO SCALE

3-INCH THK MINERAL FIBER FLEXIBLE (BLANKET TYPE) RESISTENT INSULATION WITH FACTORY-APPLIED VAPOR BARRIER. VAPOR BARRIER SHALL CONSIST OF A LAMINATION OF ALUMINUM FOIL WITH GLASS FIBER REINFORCEMENT AND KRAFT PAPER (FED. SPEC. MI-1-3586)

PASTED 8 OZ. CANVAS COVER ALL AROUND INSULATION (FOR INSULATED EXPOSED INDOOR DUCTS ONLY). CANVAS COVER SHALL BE PAINTED WITH 2 COATS OF ENAMEL WHITE PAINT. ADHESIVE SHALL CONFORM TO MIL-A-3316, CLASS 1.



1 DUCT INSULATION DETAIL  
NO SCALE

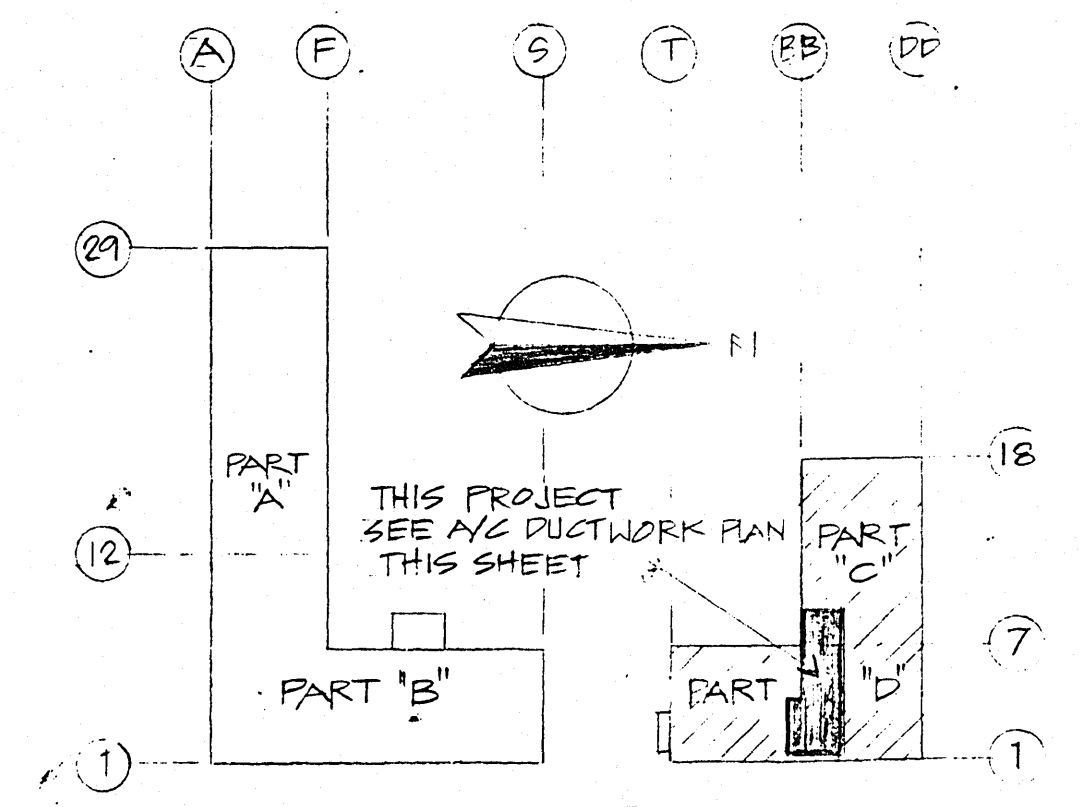
REVISIONS		
SYM	DESCRIPTION	DATE

**SCOPE OF WORK:**

ITEM NO.	DESCRIPTION
	AIR HANDLING UNIT NO. 10: REMOVE AND REPLACE EXISTING DUCT INSULATION WITH 3 INCHES THICK MINERAL FIBER FLEXIBLE (BLANKET TYPE) RESISTENT INSULATION WITH REINFORCED FOIL FACE VAPOR BARRIER FOR THE FOLLOWING DUCTS:
1	MAIN 70/19 AIR DUCT, AS INDICATED BY THE HATCH MARKS.
2	SUPPLY A/C DUCT, AS INDICATED BY THE HATCH MARKS FROM THE AIR HANDLING UNIT TO SHOP 26 STORAGE ROOM.
3	RETURN A/C DUCT, AS INDICATED BY THE HATCH MARKS FROM THE AIR HANDLING UNIT TO THE WALL WHERE THE DUCT ENTERS THE BUILDING.
4	REMOVE AND REPLACE TORN CANVAS JACKET INCLUDING DAMAGED DUCT INSULATION (SPOT REPAIR) FOR THE RETURN DUCT FROM THE AIR HANDLING UNIT TO SHOP 26 STORAGE ROOM.

**GENERAL NOTES:**

- VERIFY EXISTING FIELD CONDITIONS PRIOR TO START OF WORK.
  - AIR HANDLING UNIT AFFECTED (AHU NO. 10) SHALL BE SHUT DOWN DURING REPLACEMENT OF THE WET INSULATION ON THE DESIGNATED AIR DUCTS.
  - THE AIR DUCTS FOR RE-INSULATION SHALL BE STRIPPED OF THE WET INSULATION, CLEANED, DRIED AND REPAIRED FOR LEAKS PRIOR TO APPLICATION OF THE NEW INSULATION. NEW INSULATION SHALL BE NON-ASBESTOS.
  - THE REPLACEMENT INSULATION SHALL BE AS SPECIFIED AND INSTALLED PER DETAIL 11.
  - A NEW SHEET METAL INSULATION SHIELD SHALL BE PROVIDED BETWEEN HANGERS AND INSULATED DUCT AS SHOWN PER DETAIL 2.
  - JOINTS BETWEEN EXISTING AND NEW DUCT INSULATION SHALL BE BUTTED TIGHTLY AND SEALED WITH A 4-INCH WIDE DUCT TAPE HAVING THE SAME FACTORY APPLIED VAPOR-BARRIER AS THE DUCT INSULATION. THE TAPE OVERLAP SHALL NOT BE LESS THAN 2 INCHES AT ALL LONGITUDINAL AND DUCT JOINTS. ALL OVERLAPS SHALL BE CEMENTED WITH FIRE RESISTANT ADHESIVE CONFORMING TO MIL-A-3316, CLASS 2 AND THEN SECURED WITH NON-CORROSIVE OUTWARD CLINCHING STAPLES APPLIED AT 4 INCHES ON-CENTERS. ALL STAPLES SHALL THEN BE COATED WITH FIRE RESISTANT VAPOR BARRIER COATING, MIL-C-19565, TYPE 11 PRIOR TO APPLICATION OF THE CANVAS COVER WHERE APPLICABLE.
  - FIELD-VERIFY ACTUAL EXTENT OF THE RE-INSULATION WORK.
  - SEAL ALL TEARS, PUNCTURES AND OTHER PENETRATIONS ON THE INSULATION FACING WITH DUCT TAPE OR MASTIC TO PROVIDE A VAPOR TIGHT SYSTEM.
  - REMOVE ALL DEBRIS ON THE CEILING & DUCTS.
  - DURING THE PRELIMINARY ENGINEERING INVESTIGATION ON 14 MARCH 1990 IT WAS VERIFIED THAT THE INSULATION TO BE REMOVED IS NON-ASBESTOS.
- IN THE EVENT THAT ASBESTOS MATERIALS SHALL BE FOUND DURING REMOVAL OF THE EXISTING INSULATION, THE U.S. NAVY INDUSTRIAL HYGIENIST SHALL BE IMMEDIATELY NOTIFIED TO TEST AND VERIFY THE EXTENT OF THE PRESENCE OF ASBESTOS.
- PROPER PROCEDURE(S) FOR ASBESTOS REMOVAL BY QUALIFIED U.S. NAVY PERSONNEL SHALL BE EXERCISED.



KEY PLAN  
NOT TO SCALE

**GENERAL NOTES CONTINUATION:**

- THIS PROJECT SHALL BE ACCOMPLISHED WITHOUT DISRUPTION OF PRODUCTION WORK IN THE AREA. SCHEDULING OF WORK SHALL BE COORDINATED WITH ACTIVITY CONTACT PERSON.
- AREA BELOW WORKSITE SHOULD BE COVERED AND PROTECTED FROM DUSTS, DEBRIS, FALLING OBJECTS, ETC.

DES: FOS	DEPARTMENT OF THE NAVY NAVAL FACILITIES ENGINEERING COMMAND
DRAWN: FOS	PUBLIC WORKS CENTER
CHK: RFB	GUAM, M.I.
DIV DIR: U.S. NAVAL SRF	GUAM, M.I.
DEPTH HEAD: A. R. B. 7-3-10	RE-INSULATE A/C DUCTS (AHU NO. 10) BLDG. 21
SC: 1/11/10	A/C DUCTWORK - PARTIAL PLAN, DUCT INSULATION DETAIL, DUCT HANGERS DETAIL, LEGEND, SCOPE OF WORK, GENERAL NOTES & KEY PLAN
WR NO: 50010	
SATISFACTORY TO:	APPROVED DATE
C. S. Chaff	80091 F
(NAVCODE/100A) 7/1/10	DATE
	APPROVED DATE
	80091 F
	SCALE AS SHOWN SPEC
	P.W.C. DRAWING NO. 17409
	SHEET 1 OF 1