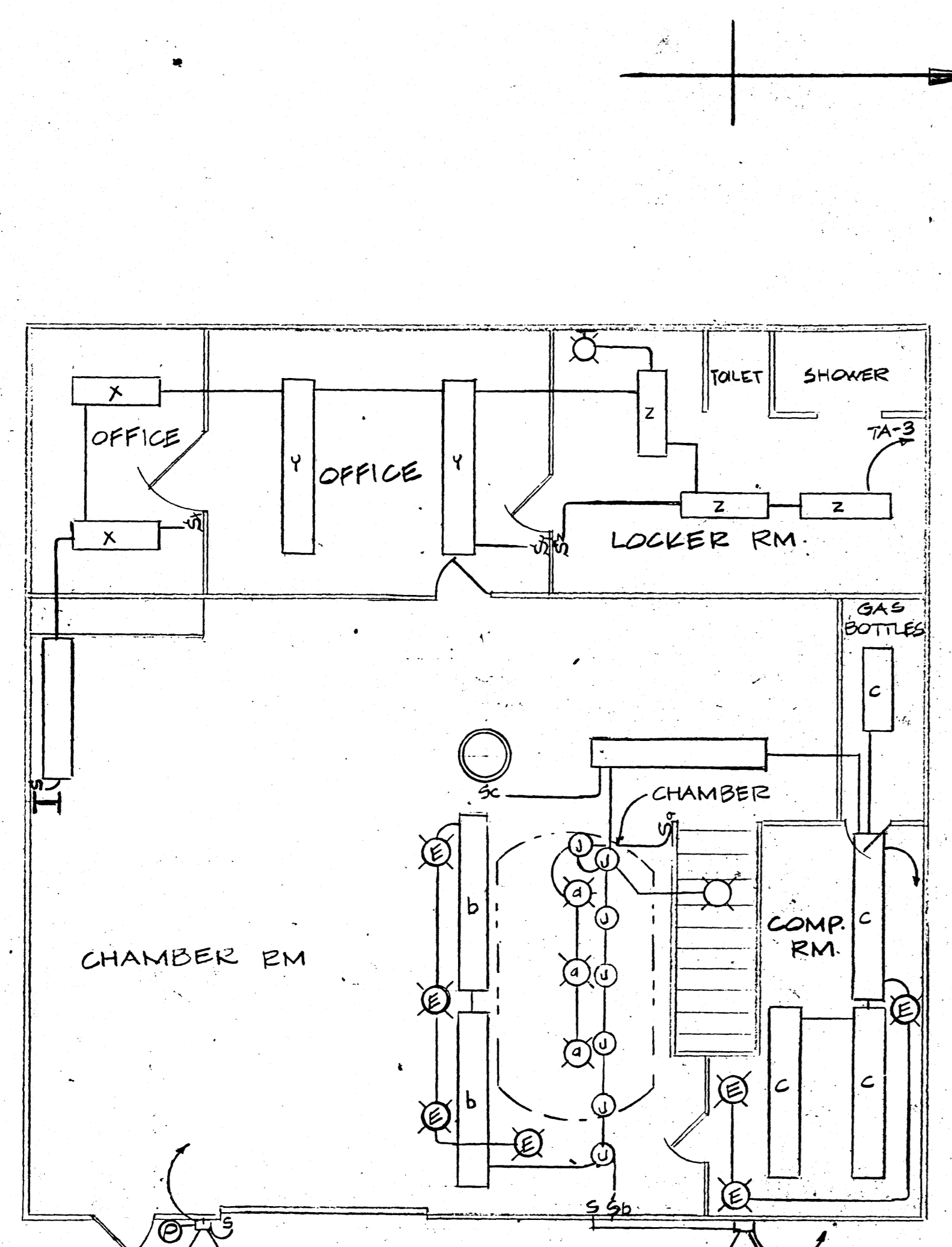
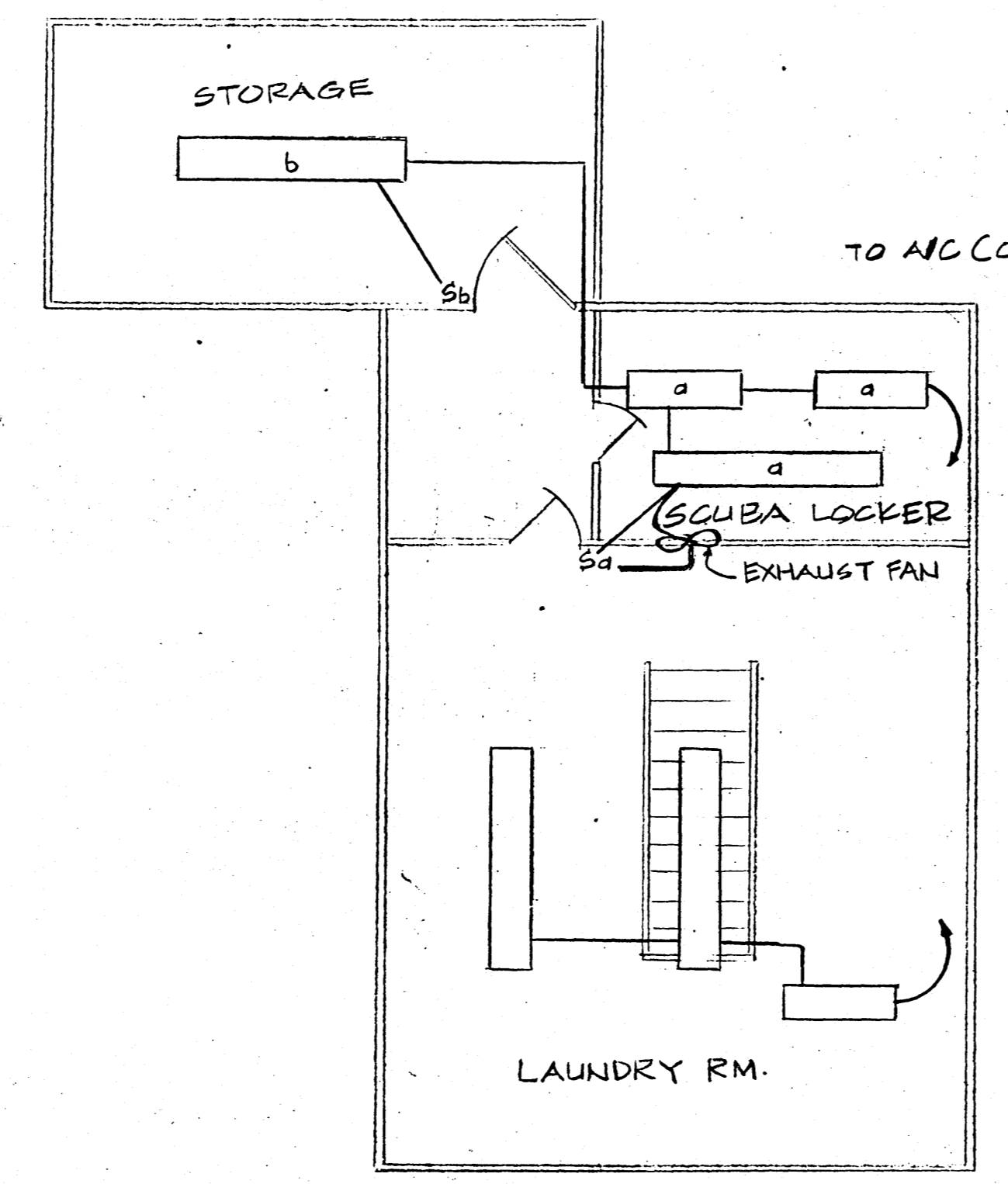


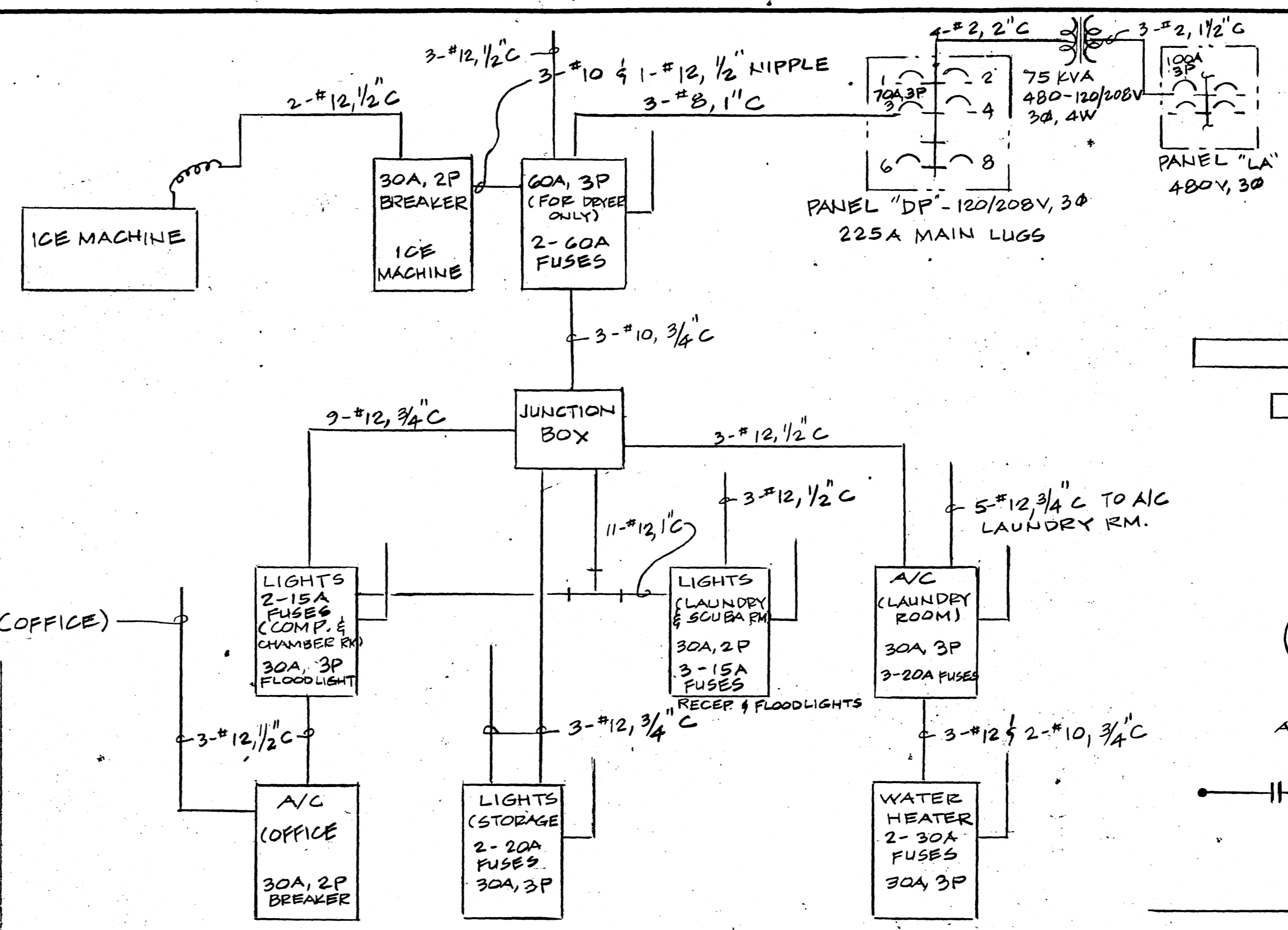
REVISIONS		
SYM	DESCRIPTION	DATE



**A LIGHTING PLAN - GROUND FLOOR**  
SCALE: 3/16" = 1'-0"

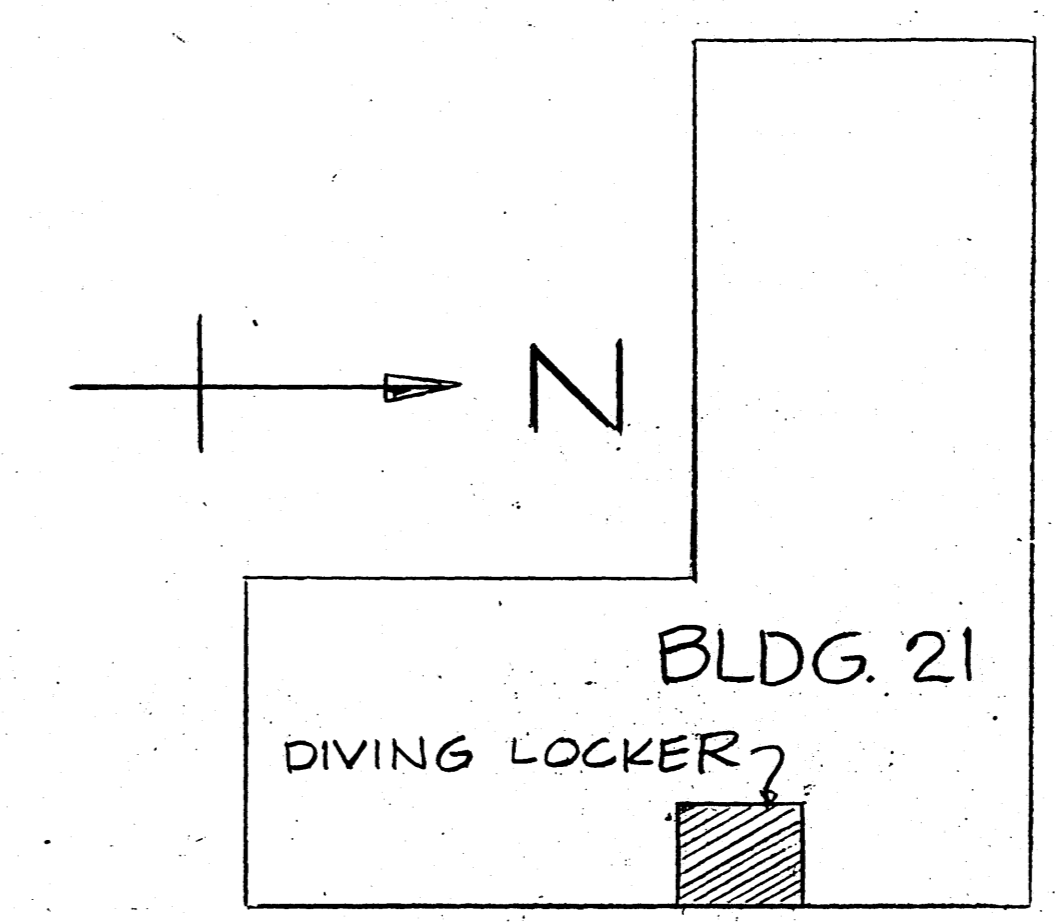


**B LIGHTING PLAN - MEZZANINE**  
SCALE: 3/16" = 1'-0"

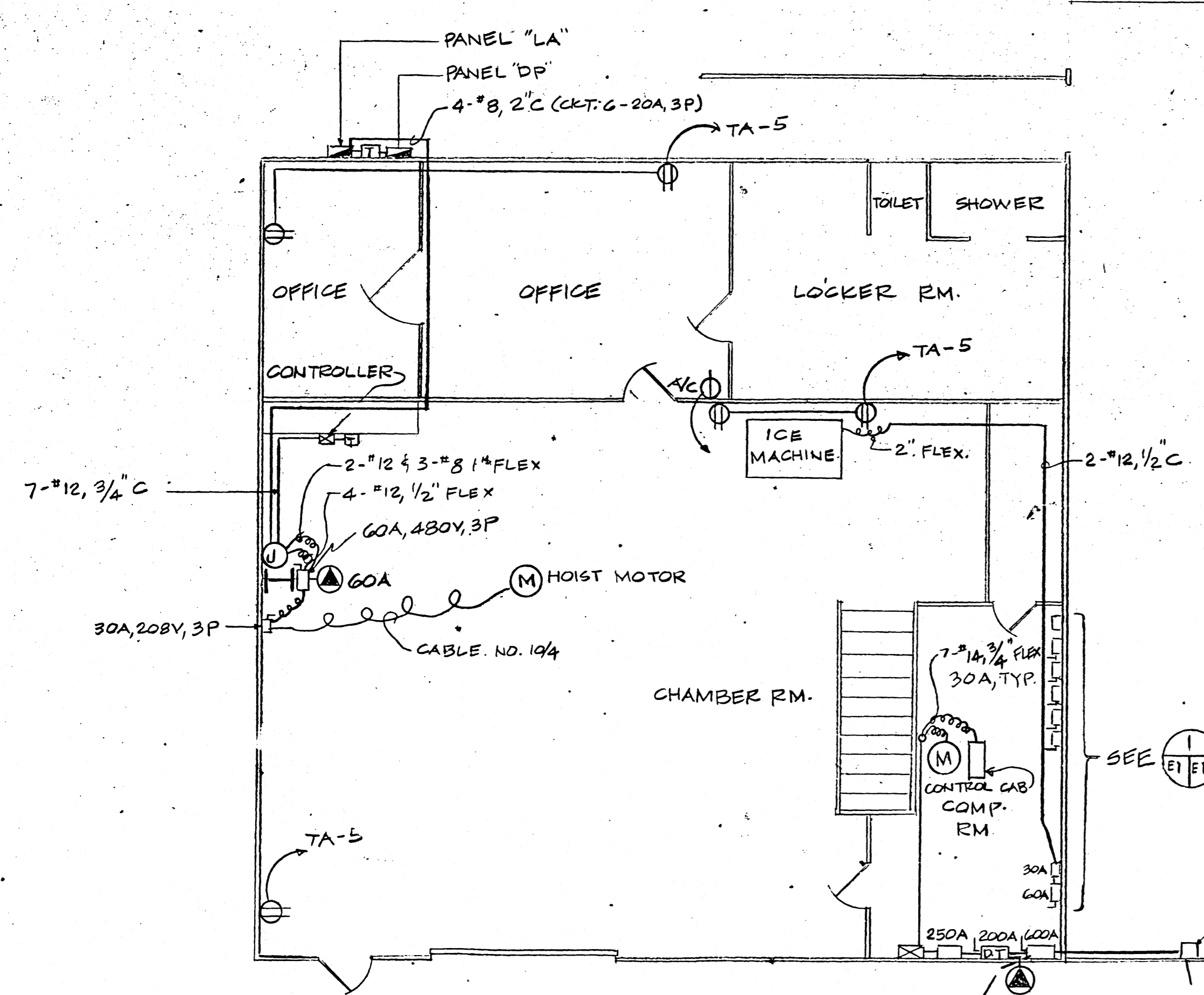


**1 SINGLE LINE DIAG.**

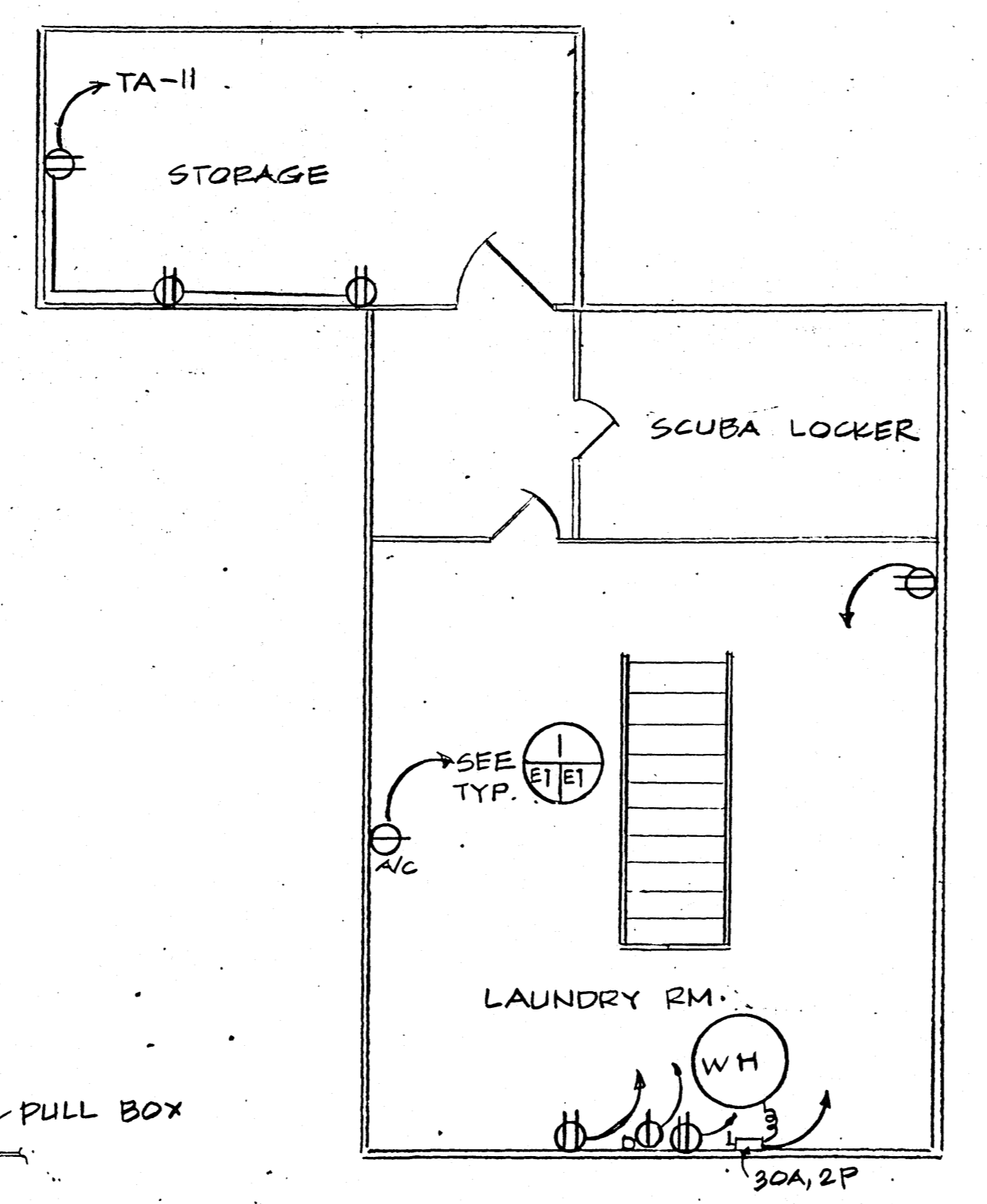
- LEGEND:**
- 2-80W, 120V, FLUORESCENT FIXTURE
  - 2-40W, 120V, FLUORESCENT FIXTURE
  - INDICATES SWITCH DESIGNATION
  - SAFETY SWITCH
  - STARTER
  - CIRCUIT BREAKER
  - MOTOR
  - WATER HEATER
  - RECEPTACLE, DUPLEX, 120V, 15, 3W, 30A
  - RECEPTACLE, SINGLE, 220V, 10, 20A FOR AIRCONDITION
  - RECEPTACLE, SINGLE, 220V, 10, 30A FOR DRYER
  - NORMALLY OPEN CONTACT
  - NORMALLY CLOSE CONTACT
  - CONDUIT WIRING
  - LIGHT SWITCH, SPST, 20A
  - FLEXIBLE CONDUIT
  - DOUBLE THROW SWITCH
  - EMERGENCY LIGHT W/ BATTERY
  - RECEPTACLE, 480V, 30, 4W
  - JUNCTION BOX
  - FLOOD LIGHT, 150W, 120V
  - INCANDESCENT FIXTURE W/ SWITCH, 100W, 120V
  - PHOTO CELL
  - TRANSFORMER, 480-120/208V, 30
  - INCANDESCENT FIXTURE



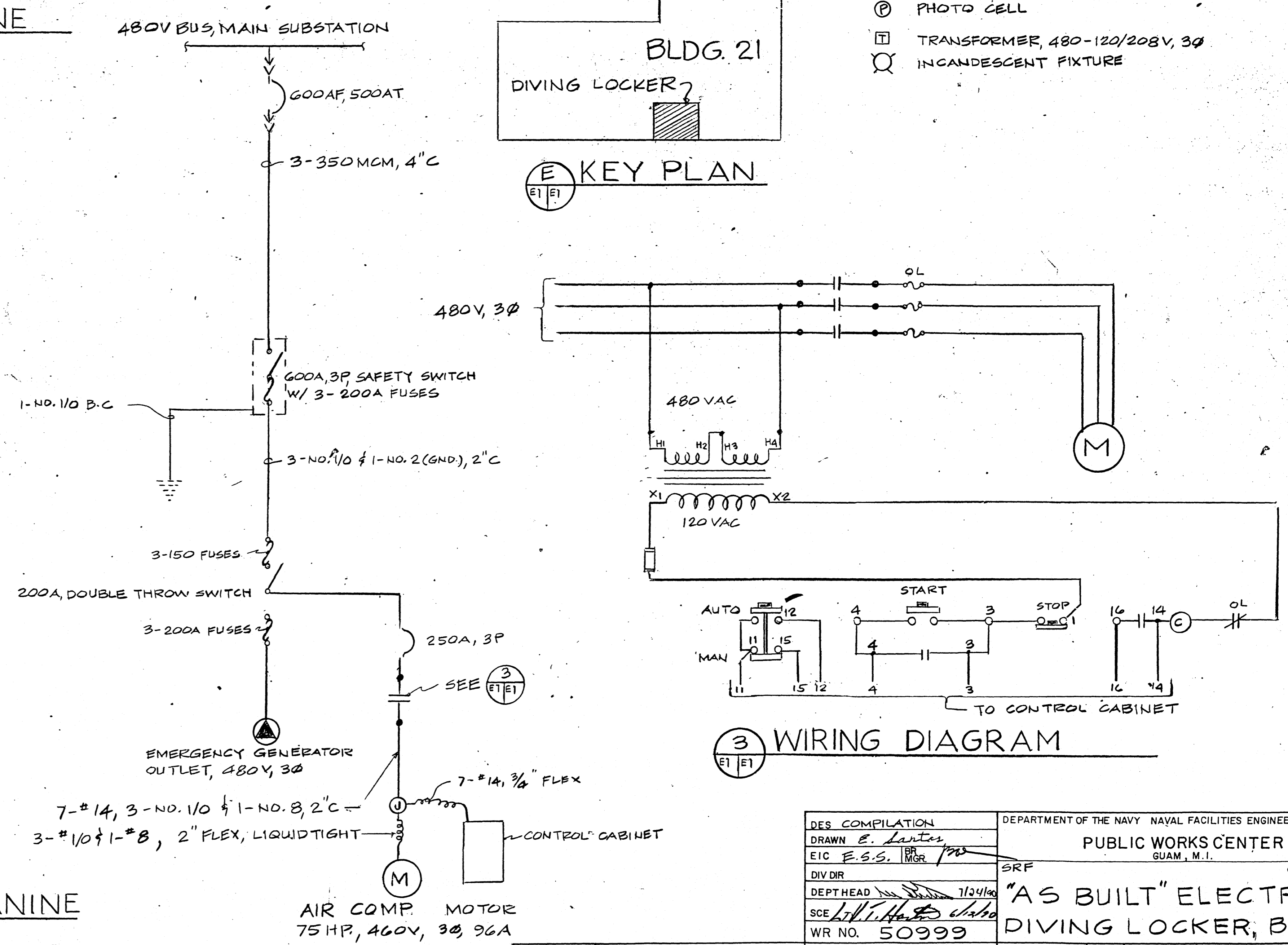
**E KEY PLAN**



**C POWER PLAN - GROUND FLOOR**  
SCALE: 3/16" = 1'-0"



**D POWER PLAN - MEZZANINE**  
SCALE: 3/16" = 1'-0"



**3 WIRING DIAGRAM**

**2 SINGLE LINE DIAG. (AIR COMP. ONLY)**

DES. COMPILATION DRAWN <i>E. Lantz</i> EIC <i>E.S.S.</i>	DEPARTMENT OF THE NAVY NAVAL FACILITIES ENGINEERING COMMAND PUBLIC WORKS CENTER GUAM, M.I.
DIV DIR DEPTH HEAD SCE WR NO. 50999	SRF "AS BUILT" ELECTRICAL DIVING LOCKER, BLDG 21
APPROVED _____ DATE _____	CODE IDENT NO. 80091 SIZE F PWC DRAWING NO. 17349
APPROVED _____ DATE _____	SCALE AS SHOWN SPEC SHEET 1 OF 1