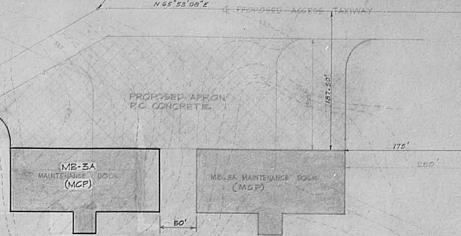
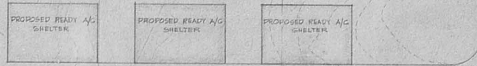


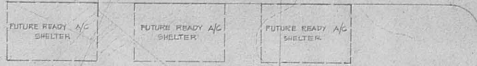
WOODBRAY
 122750731
 N 66°58'08" E
 N 208°287.57
 1227174.91



FUTURE APRON



PROPOSED ACCESS TAXIWAY



ALERT WALKWAY

ALERT TAXIWAY

E. WEST NORTH TAXIWAY EDGE



NOTES:

1. ELEVATIONS TAKEN FROM DANIEL MANN JOHNSON & MONSENBALL AIRPORT OPERATIONAL PLANNING NO. 80-154-000, SHEET E OF A. TIE-DOWN FITTINGS WILL BE INSTALLED IN ACCORDANCE WITH SAC. GROUND PLANT, IS SECURE.
2. PROPOSED LOCATION OF COMPRESSOR HOUSE, WATER TANKS & FUEL WETLANDS NOT SHOWN. SEE NOTE #3.
3. REFERR TO AIR FORCE DWG NO. T1-00-001, SKT. C OF E FOR ADDITIONAL UTILITIES IN THIS AREA.
4. FOR ELECTRICAL LAYOUT, SEE 'A' AND 'B' SKETCH NO. 10-0-0.

SITE PLAN
 SCALE 1" = 50'

LEGEND

- M/E-EA MAINTENANCE DOCK
- PROPOSED READY AIRFIELD SHELTER
- FUTURE READY AIRFIELD SHELTER
- EXISTING AIRFIELD PAVEMENT
- PROPOSED FUTURE APRON
- WATER LINE
- SENSITIVE SERVICE LINE
- ELECT. COMMUNICATION DUCT LINE
- CONTOUR LINE (ELEV. 100')

DEFINITIVE ONLY

| | | |
|---|-------------------------|------|
| DATE | APPROVED | DATE |
| 15755 | ANDERSEN AND FORSE DALE | 1964 |
| OFFICER IN CHARGE OF CONSTRUCTION | | |
| AIRCRAFT MAINT. DOCKS | | |
| F.I.S. FACILITIES | | |
| SITE PLAN | | |
| SCALE AS SHOWN | DATE | 1964 |
| THIS DRAWING COPIED FROM APPROVED AIR FORCE DRAWINGS. | | |
| T & P DWG NO. 857.067 | | |