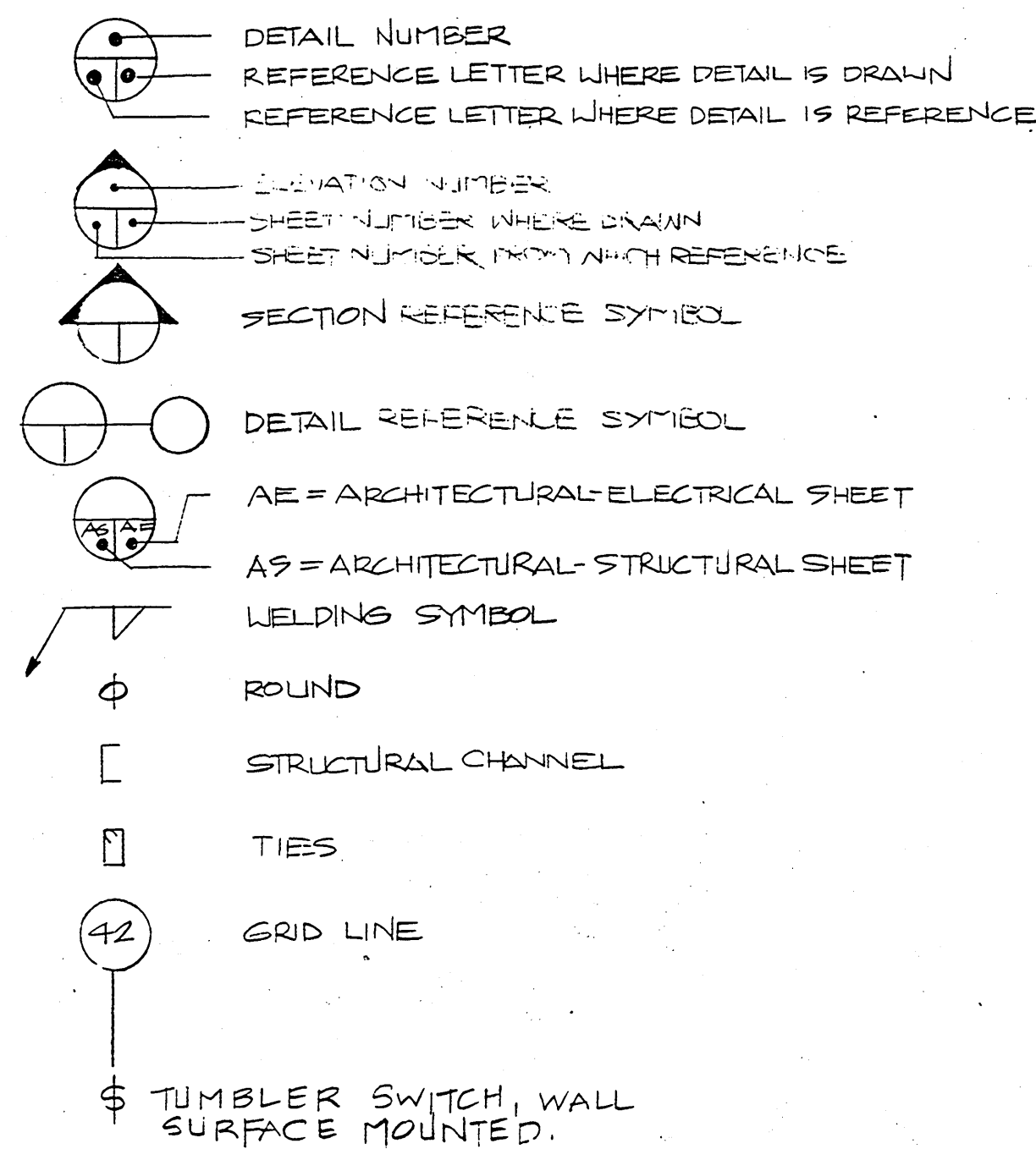


**SYMBOLS**

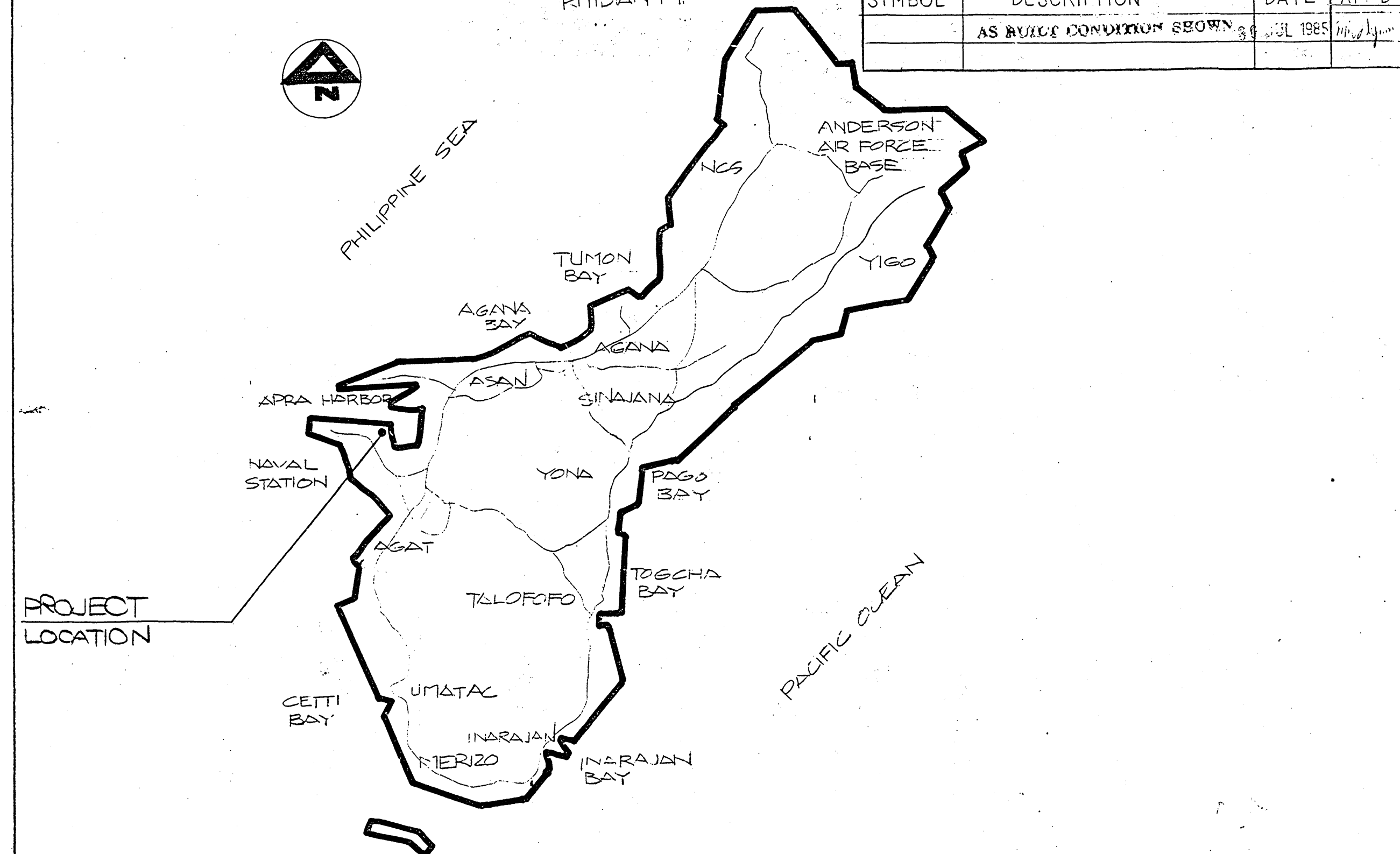
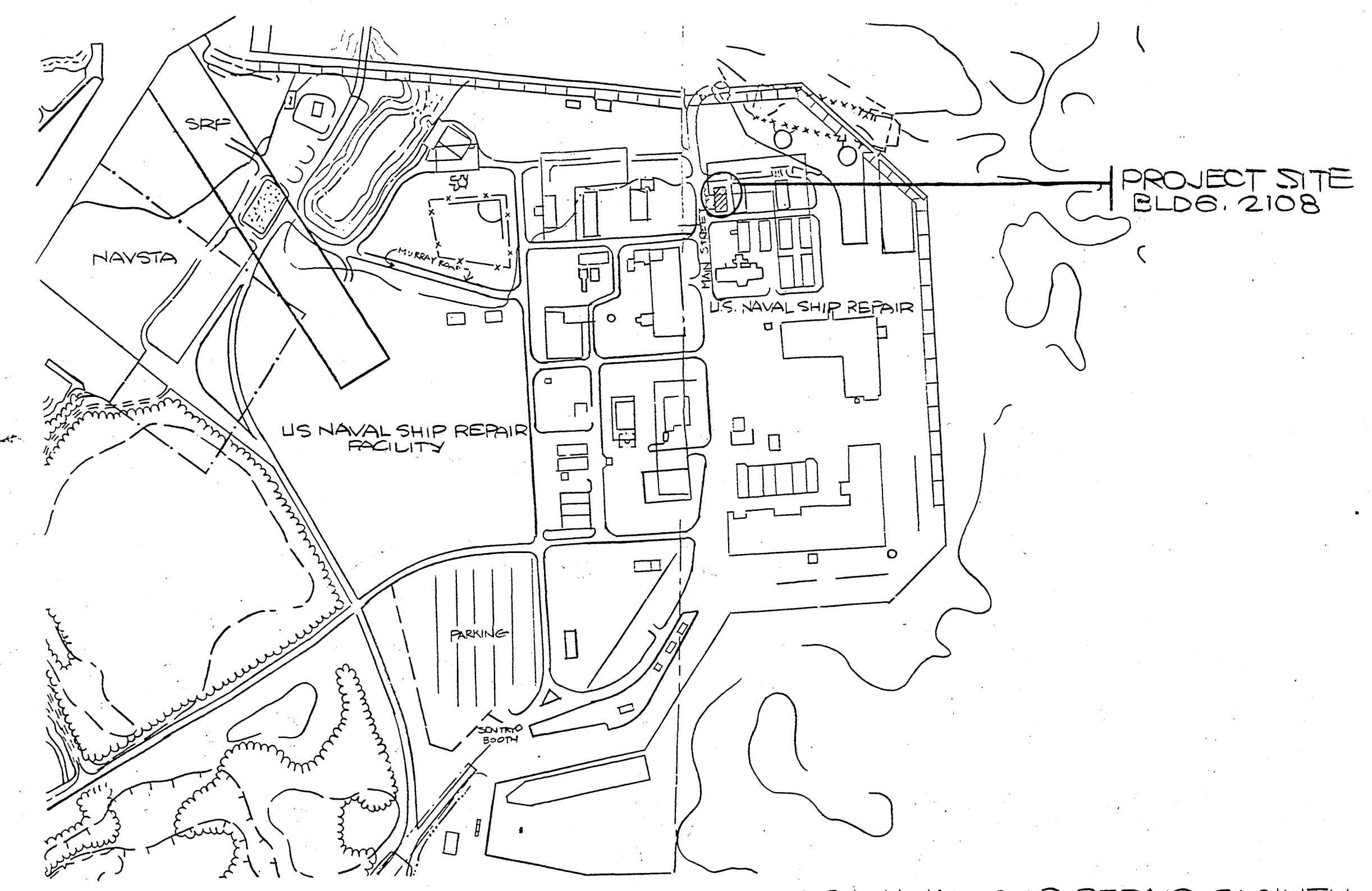


**ABBREVIATIONS**

& AND  
 CONC. CONCRETE  
 CONT. CONTINUOUS  
 FLR. FLOOR  
 FIN. FINISH  
 EXIST. EXISTING  
 CORR. CORRUGATED  
 EXH. EXHAUST  
 FHMS. FLAT HEAD METAL SCREEN  
 GA. GAUGE

**NOTES**

1. ALL DIMENSIONS IN EXISTING CONDITIONS SHALL BE VERIFIED IN THE FIELD OF DATA TO BE ACCORDINGLY.
2. ALL EXISTING MATERIALS WHICH ARE DAMAGED DURING REMOVAL AND CONSTRUCTION SHALL BE REPLACED OR REPAIRED AND TOUCH UP BY THE CONTRACTOR WITHOUT COST TO THE U.S. GOVERNMENT.
3. ALL NEW ITEMS TO BE PAINTED TO MATCH EXISTING.



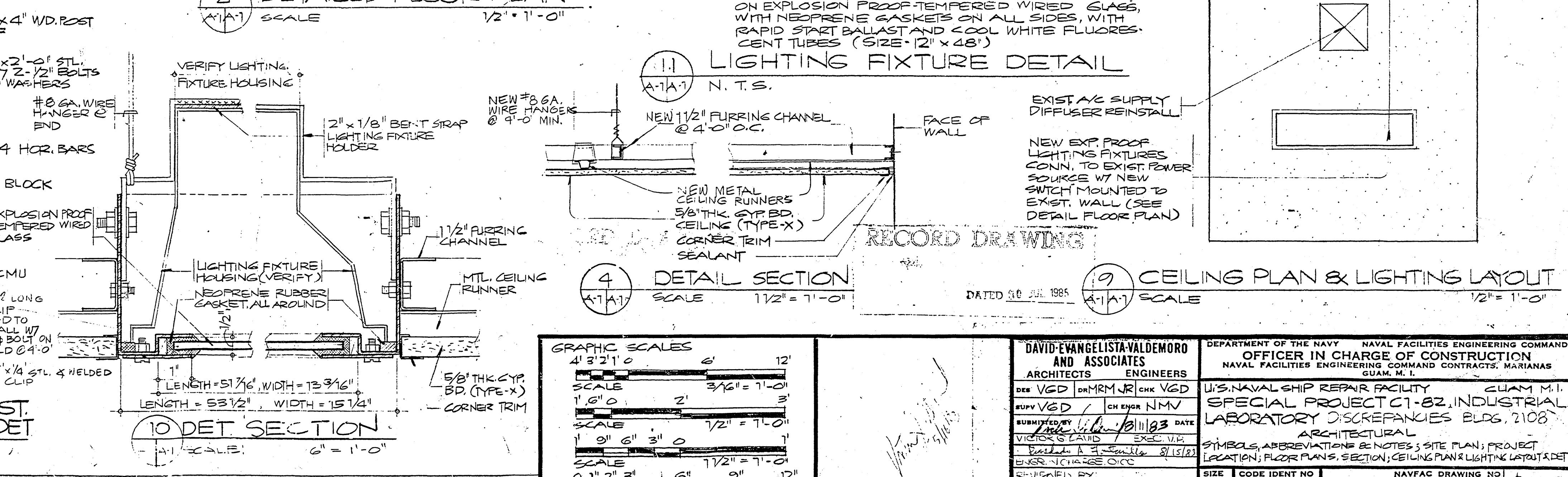
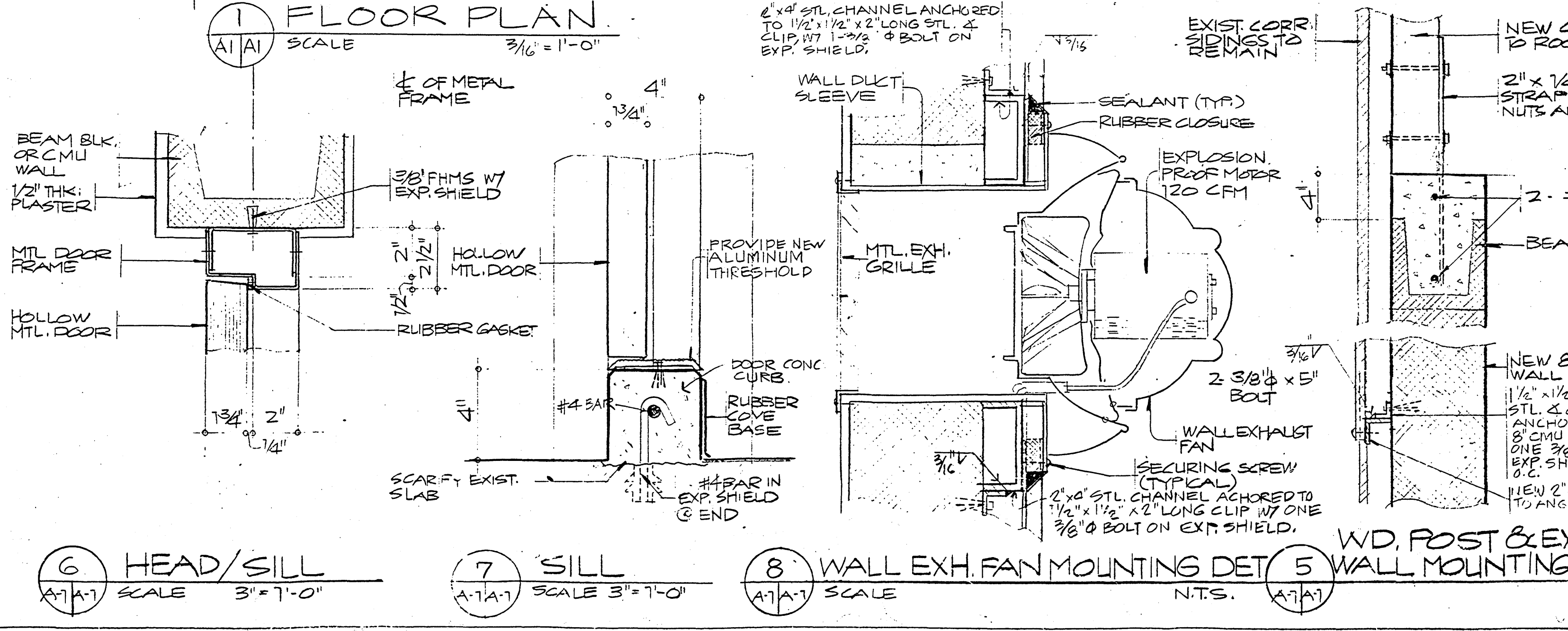
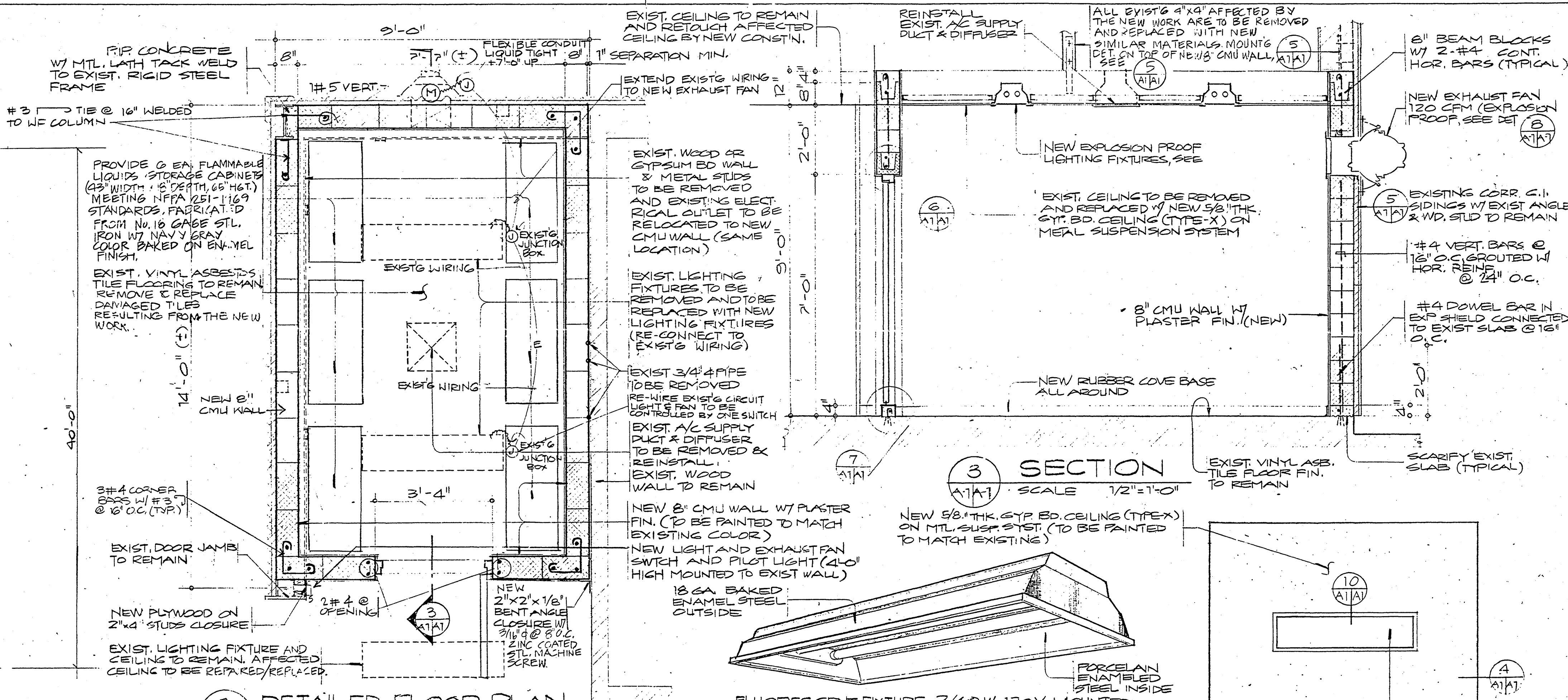
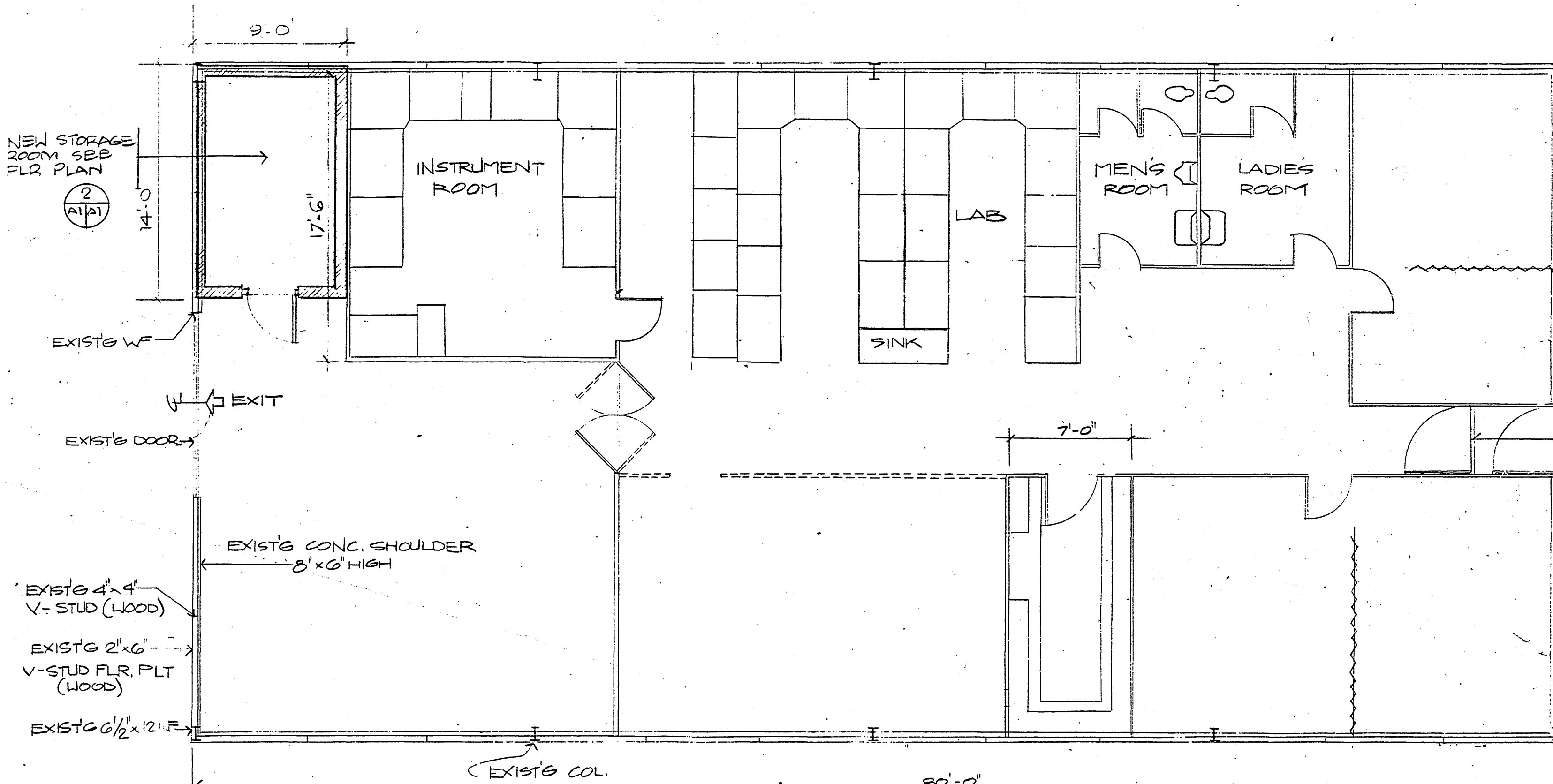
REVISIONS			
SYMBOL	DESCRIPTION	DATE	APPD
	AS BUICE CONSTRUCTION SEWING	31 JUL 1985	1/1/1/1

**A** SYMBOLS, ABBREVIATIONS & NOTES

**B** SITE PLAN

**C** LOCATION PLAN

COLOR SCHEDULE					
FLOOR	BASE	WALLS	CEILING	DOOR	DOOR JAMB & HEAD
STORAGE ROOM	EXIST. TO REMAIN	BLACK NEW RCB	WHITE	23578	23448
WALLS EXPOSED TO HALLWAY	EXIST. TO REMAIN	BLACK NEW RCB	WHITE (23578)	23578	23448



GRAPHIC SCALES

1" = 2'-0"	1/2" = 1'-0"	3/8" = 1'-0"	3/16" = 1'-0"
1/4" = 1'-0"	1/8" = 1'-0"	1/16" = 1'-0"	1/32" = 1'-0"

DAVID EVANGELISTA VALDEMORO AND ASSOCIATES ARCHITECTS ENGINEERS

DEPARTMENT OF THE NAVY NAVAL FACILITIES ENGINEERING COMMAND OFFICER IN CHARGE OF CONSTRUCTION NAVAL FACILITIES ENGINEERING COMMAND CONTRACTS, MARIANAS GUAM, M.I.

U.S. NAVAL SHIP REPAIR FACILITY GUAM M.I. SPECIAL PROJECT C1-82, INDUSTRIAL LABORATORY DISCREPANCIES BLDG. 2108

SYMBOLS, ABBREVIATIONS & NOTES, SITE PLAN, PROJECT LOCATION, FLOOR PLANS, SECTION, CEILING PLAN & LIGHTING LAYOUT & DET

DATE 4/17/83

SCALE 1/2" = 1'-0"

NO. 7,311,679

CONSTR. CONTRACT NO. N62768-83-C-076

SHEET 1 OF 1