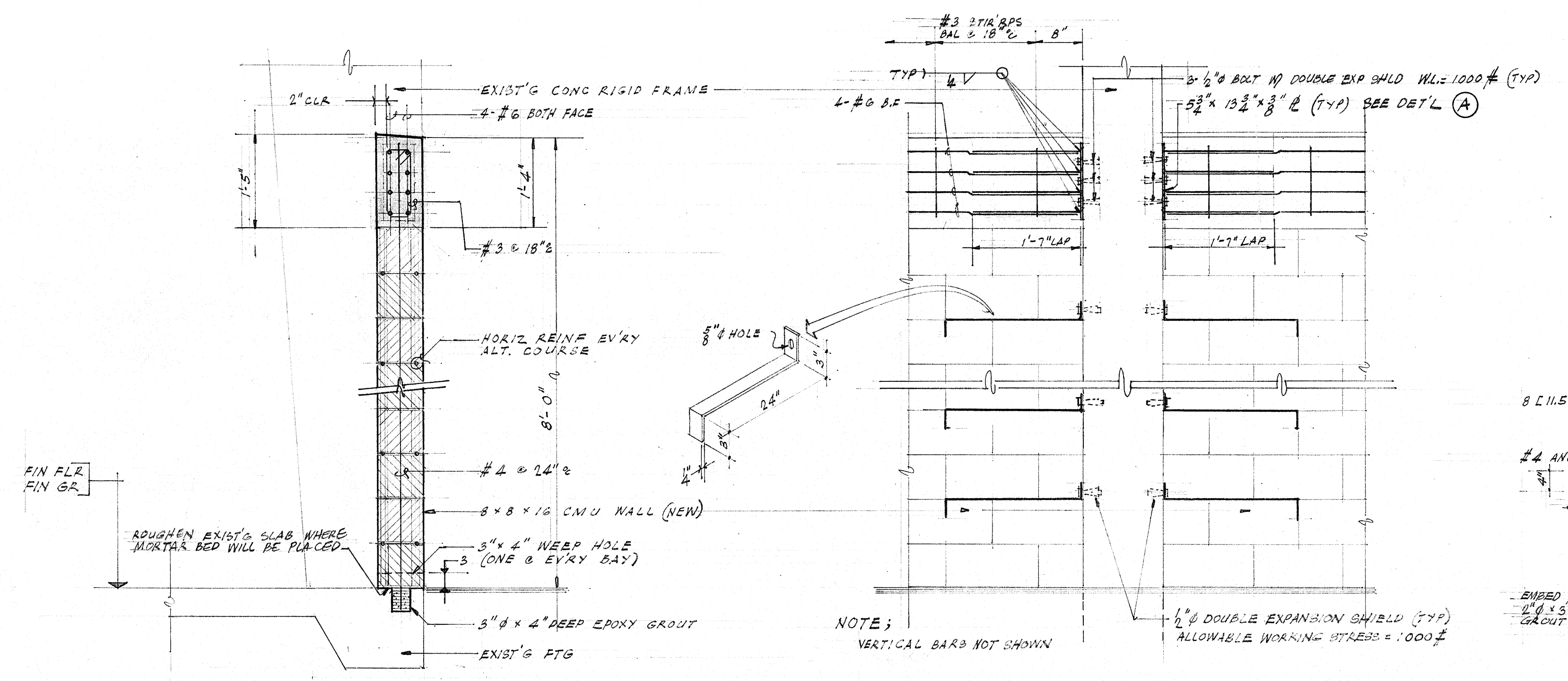
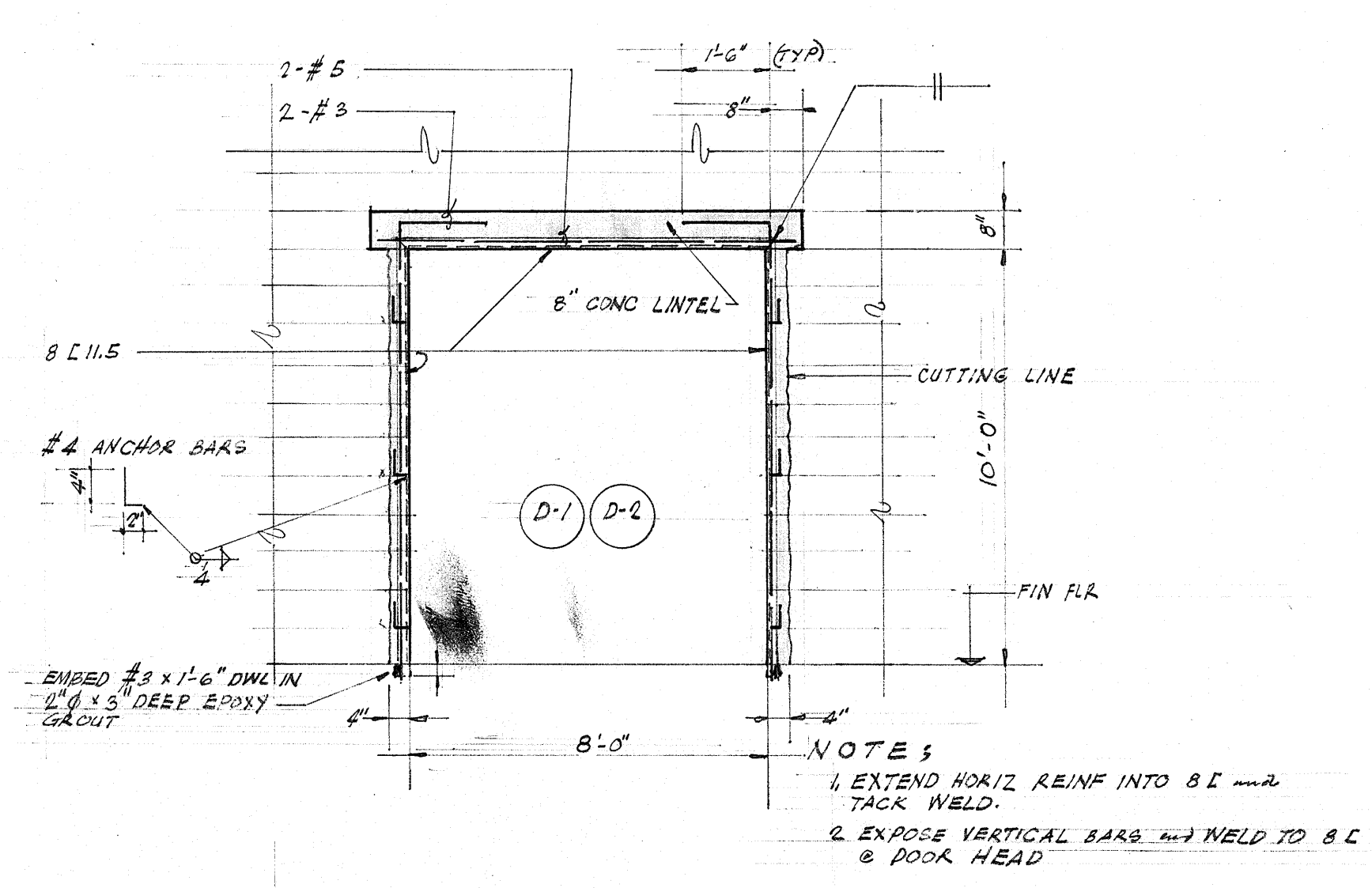


REVISIONS			
SYM	DESCRIPTION	DATE	APPROVED

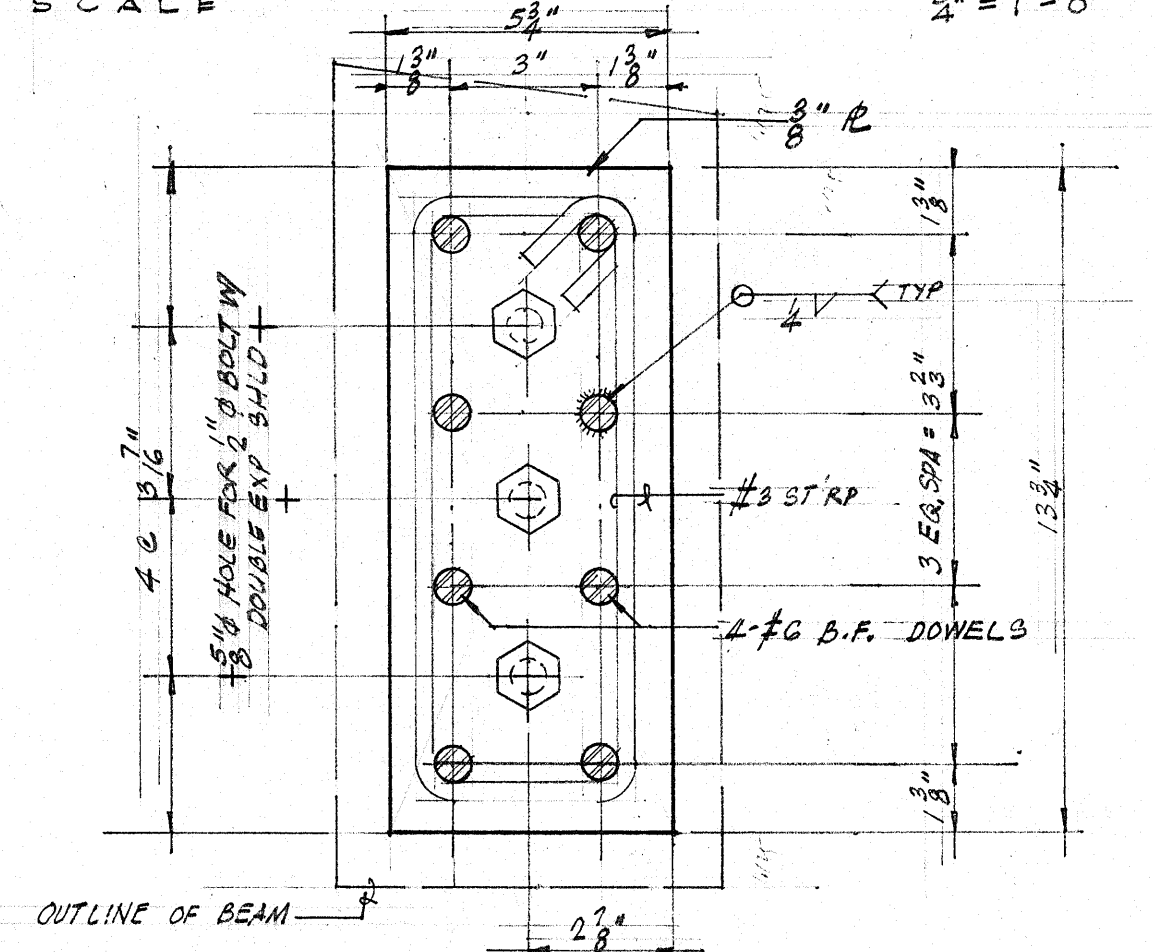


SECTION 1
SCALE 3/8" = 1'-0"

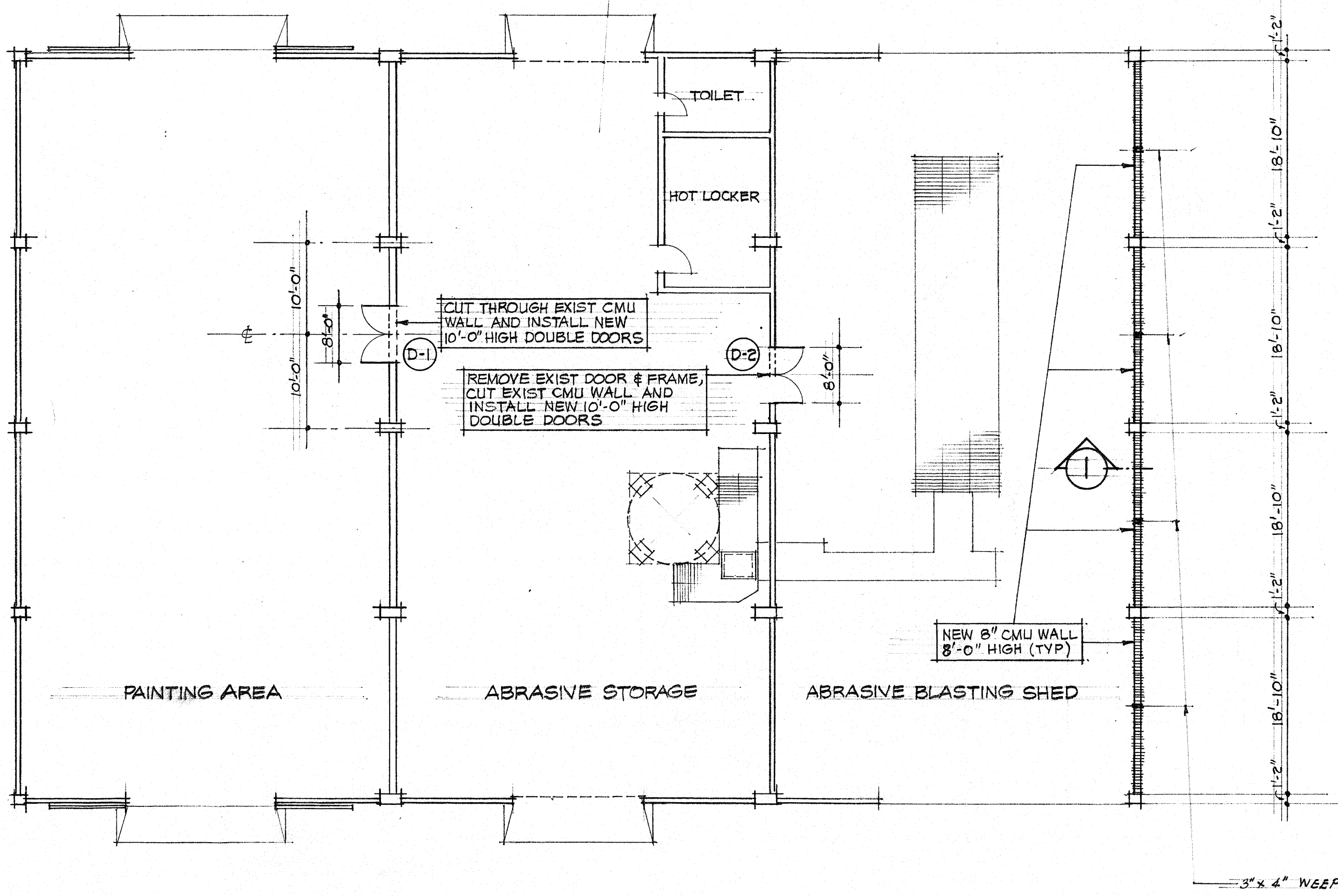
ELEV. SHOWING CONNECTION OF NEW CMU WALL TO EXIST'G CONC RIGID FRAME
SCALE 3/8" = 1'-0"



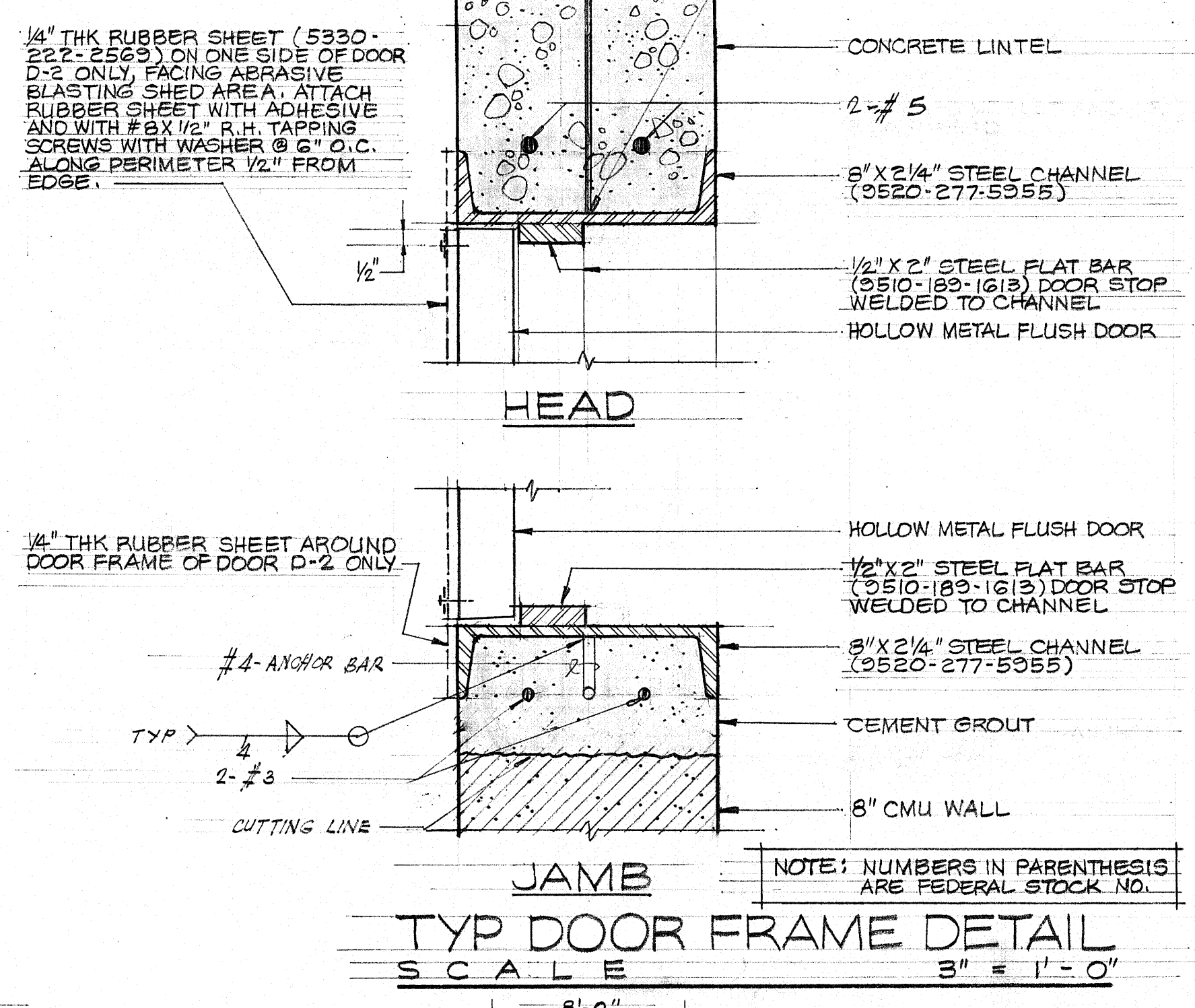
ELEVATION @ D-1 OR D-2
SCALE 3/8" = 1'-0"



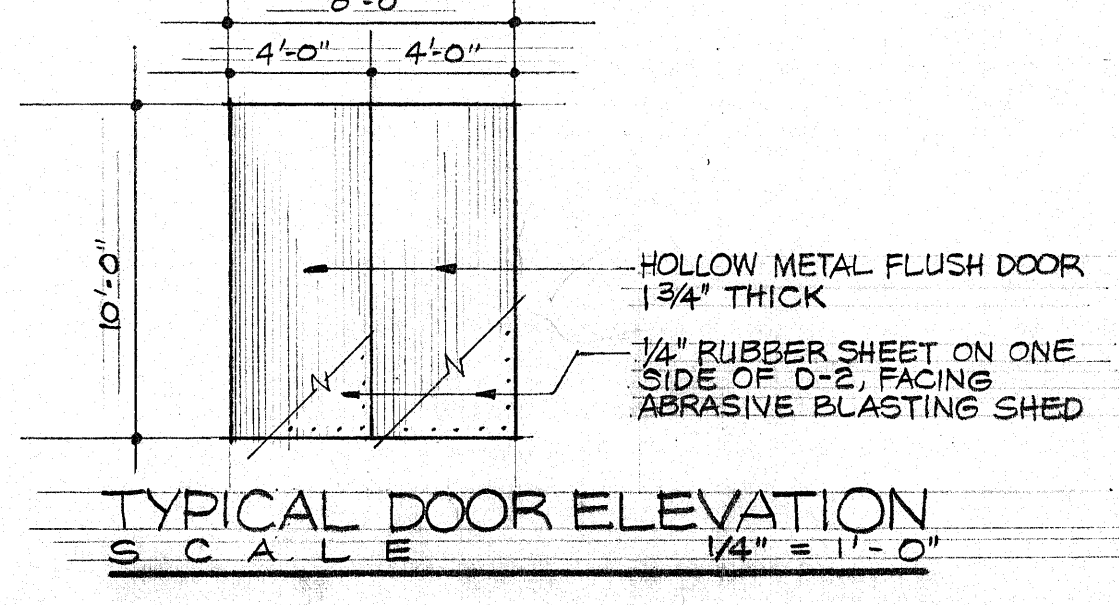
DETAIL A (3/8" PL)
SCALE 3/8" = 1'-0"



FLOOR PLAN
SCALE 3/32" = 1'-0"



TYPICAL DOOR FRAME DETAIL
SCALE 3/8" = 1'-0"



TYPICAL DOOR ELEVATION
SCALE 1/4" = 1'-0"

TYPICAL DOOR HARDWARE SET FOR EACH	
4 PRS-HINGE, BUTT ZINC PLATED, 4"x4"	(5340-283-4250)
1 EA-LOCKSET, MORTISE TUBULAR CASE	(5340-281-2194)
1 EA-BOLT, CHAIN 6", WROUGHT STEEL	(5340-240-2358)
1 EA-BOLT, FOOT, SPRING ACTION, 6"	(5340-263-3435)
2 EA-DOOR STOP # HOLDER, COMB.	(5340-363-5013)

NOTE: ADHESIVE FOR ATTACHING RUBBER SHEET TO DOOR D-2 SHALL BE EPOXY RESIN (8040-270-8137) SURFACE OF METAL DOOR TO RECEIVE RUBBER SHEET BE THOROUGHLY CLEANED TO BARE METAL BEFORE APPLICATION OF ADHESIVE.

STRUCTURAL NOTES

- I DESIGN DATA
 1. WIND VELOCITY = 155 MPH. @ 61.5 PSF
 NO INCREASE IS ALLOWED IN NORMAL WORKING STRESSES
 2. STRENGTHS & CONCRETE
 a. CONCRETE $f'_c = 3000$ PSI
 b. CMU WALL $f_m = 1200$ PSI
 c. REIN. STEEL $f_y = 20000$ PSI
 d. STRUCT. STEEL $f_y = 20000$ PSI
 e. CEMENT MORTAR $f_m = 2000$ PSI
- II NOTES
 1. ALL CONCRETE SHALL HAVE 8000 PSI COMPRESSIVE STRENGTH IN 28 DAYS, CLASS E 1.5 AND SHALL CONFORM TO THE LATEST ACI 308 CODE AND NAVFAC SPEC 1310
 2. MASONRY UNITS SHALL BE GRADE 1 UNITS CONFORMING TO A S T M SPEC C 90-64 T
 3. FIRST COURSE OF MASONRY SHALL BE LAID ON THE EXISTING SLAB ON FULL MORTAR BED.
 4. REIN. STEEL SHALL CONFORM TO FED SPEC QQ-S-682 D, TYPE II, CLASS B 40
 5. ALL WELDING WORK SHALL BE DONE BY CERTIFIED WELDERS ONLY.
 6. ALL FERROUS METAL SHALL BE PREPARED IN ACCORDANCE W/ TYPE SPECIFICATION TS-PS12 AND SHALL BE PAINTED AS FOLLOWS:
 a. 1 - COAT OF MIL - C - 8516 B(1) (PRE-TREATMENT COATING)
 b. 1 - COAT OF TT - P - 0086 B(1) TYPE III RED LEAD
 c. 2 - COATS OF TT - E - 489 A FINISH COAT
 COLOR OF PAINT TO MATCH EXISTING

DES	ICRH	STRUC	DEPARTMENT OF THE NAVY NAVAL FACILITIES ENGINEERING COMMAND
DRAWN	PCY	CCORUZ	PUBLIC WORKS CENTER
CHK	J. D.	P.A.S. 9/10	GUAM, M. I.
DIV DIR	J. DRIERCO	P. A. EISON	GUAM, M. I.
DEPT HEAD	J. DRIERCO	7/10/66	MODIFICATIONS TO BLDG 22
FACE	J. D. DRIERCO		SANDBLAST and PAINT FACILITY
WR NO	1500560		ARCHITECTURAL - STRUCTURAL
APPROVED	J. DRIERCO	DATE 7/10/66	PWC DRAWING NO
COMMANDING OFFICER			14041
SCALE NOTED	SPEC	NBY	SHEET 1 OF 1