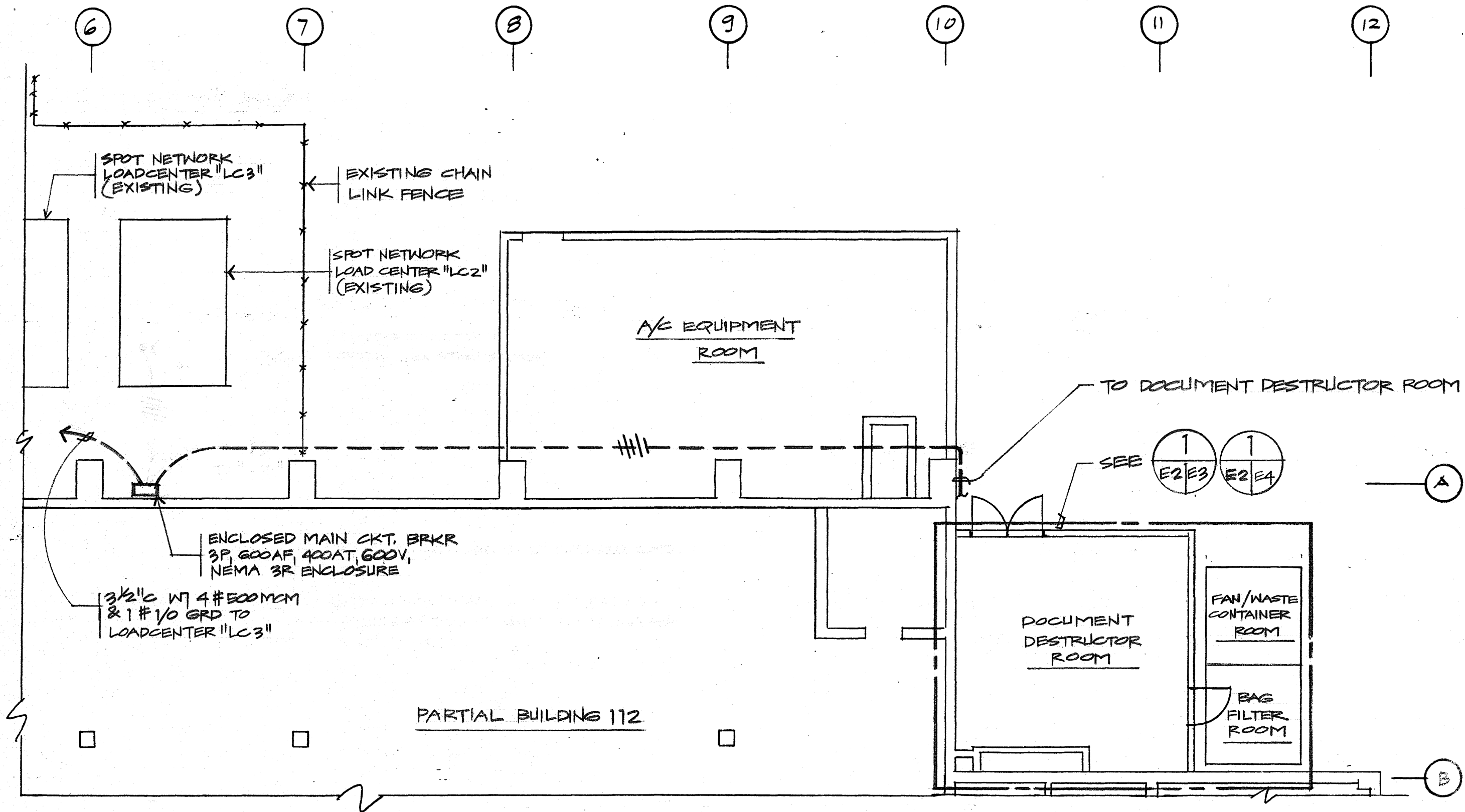

ONE LINE DIAGRAM
 NOT TO SCALE

PWC SKETCH DWG. NO. SK08-94
 TITLE: REPLACE INCINERATOR, BLDG. 112
 NCTAMS (F), GUAM, M. I.
 DRAWN: HAH
 PDE: ACD
 CHECKED: *[Signature]* 7-28-94
 BRANCH MANAGER: *[Signature]* 7-28-94
 HEAD, FACILITIES ENG'G.: *[Signature]* 7/28/94

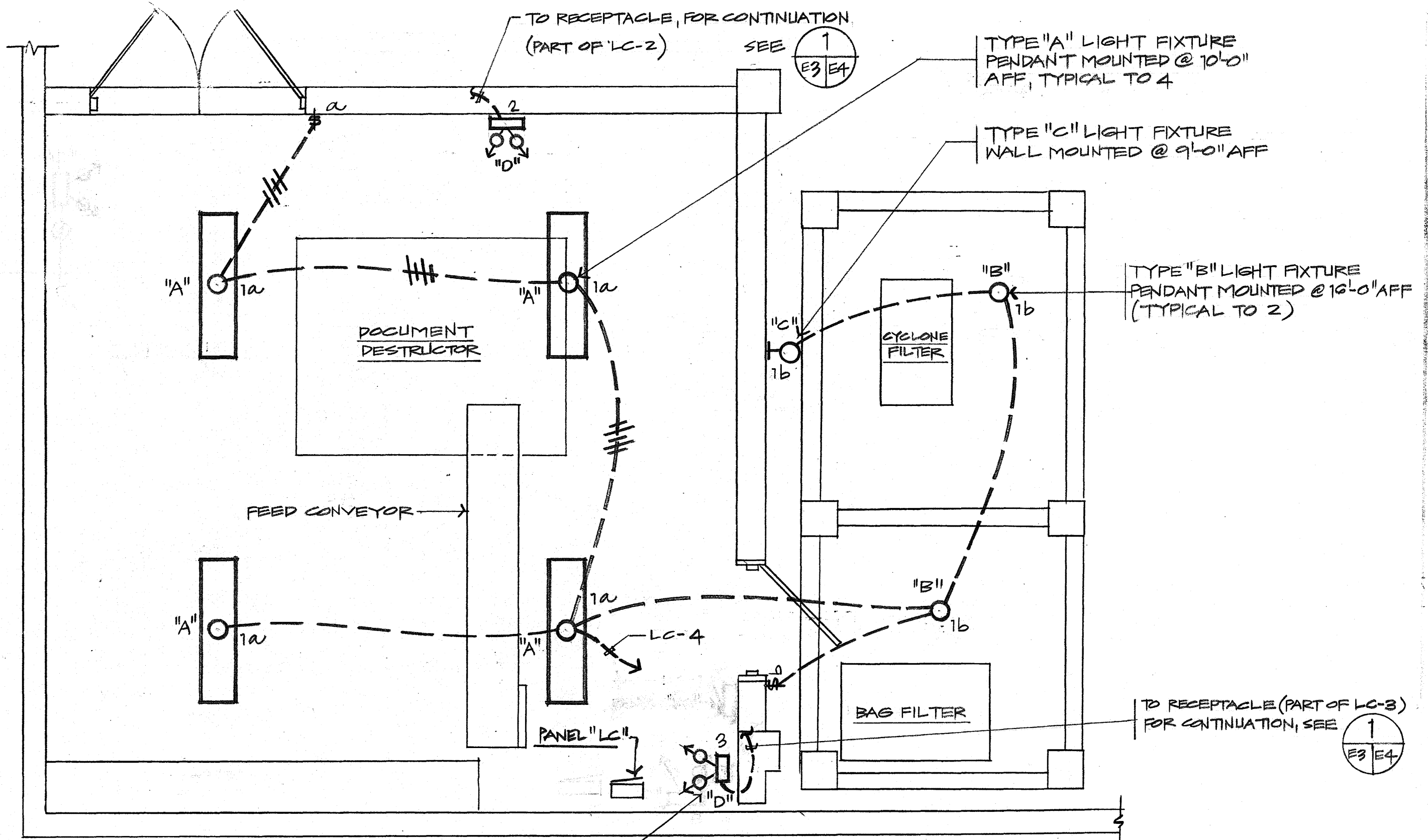


1 ELECTRICAL PLAN

EA

SCALE: 3/8" = 1'-0"

PWC SKETCH DWG. NO. SK08-94
 TITLE: REPLACE INCINERATOR, BLDG. 112
 NCTAMS (F), GUAM, M. I.
 DRAWN: HAH
 PDE: ACD
 CHECKED: *[Signature]* 7-28-94
 BRANCH MANAGER: *[Signature]* 7/28/94
 HEAD, FACILITIES ENG'G.: *[Signature]* 7/28/94



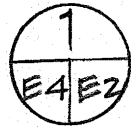
$\begin{matrix} 1 \\ E3 \\ E3 \end{matrix}$ LIGHTING PLAN

SCALE: $\frac{3}{8}'' = 1' - 0''$

PWC SKETCH DWG. NO. SK08-94
 TITLE: REPLACE INCINERATOR, BLDG. 112
 NCTAMS (F), GUAM, M. I.
 DRAWN: HAH
 PDE: ACD
 CHECKED: *Japin* 7-28-94
 BRANCH MANAGER: *OW* 7-28-94
 HEAD, FACILITIES ENG'G.: *Yaher* 7-28-94

FOR CONTINUATION

SEE



TO EMERGENCY LIGHT

SEE



WEATHERPROOF

3P30A, 240V, NFS, NEMA 4
SSTL ENCL. (TYP. TO 2)

TO LC-1 VIA
MOTOR STARTER

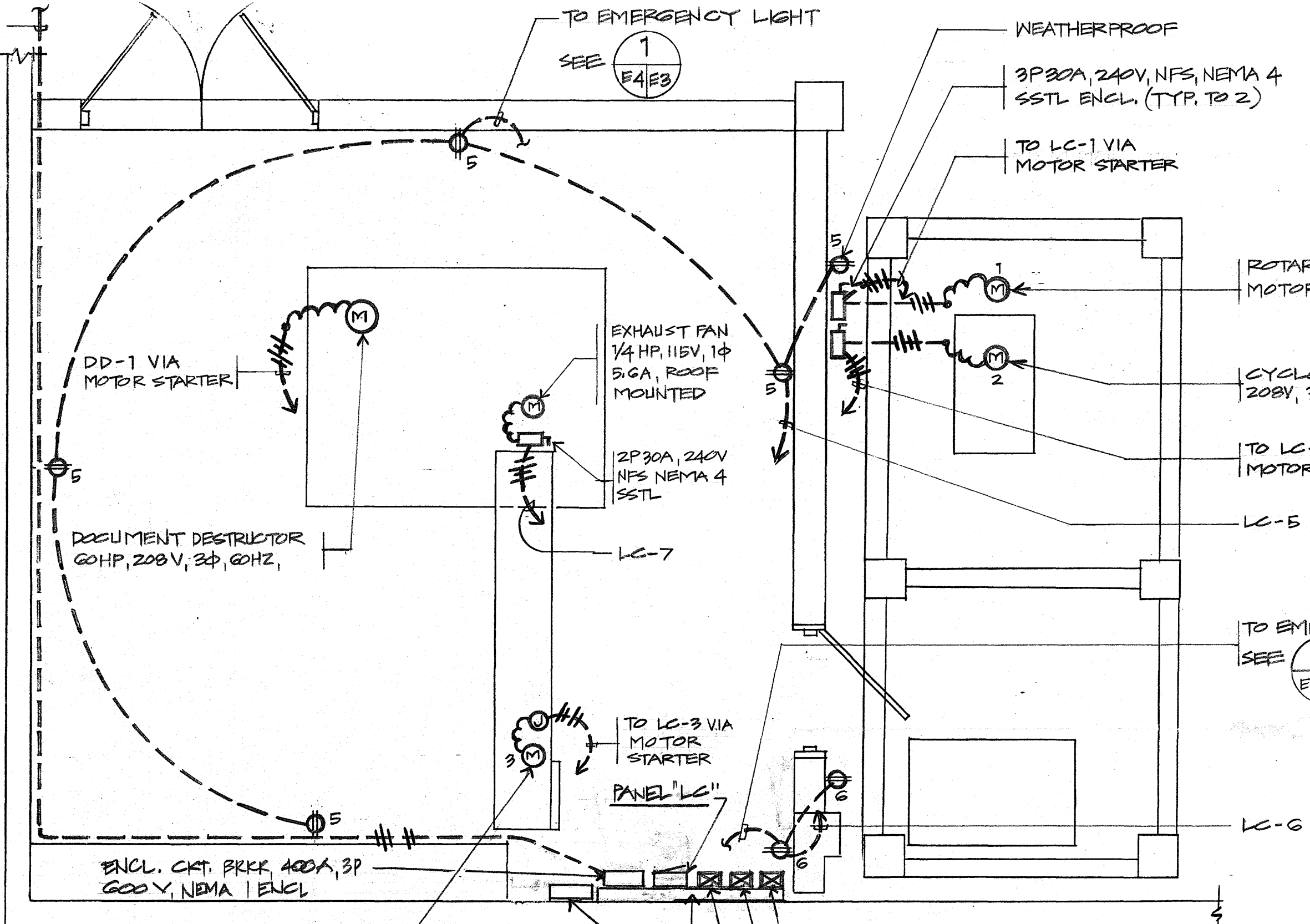
ROTARY AIRLOCK VALVE
MOTOR, 208V, 3Φ, 60HZ, 18A

CYCLONE FILTER MOTOR
208V, 3Φ, 60HZ, 9A

TO LC-2 VIA
MOTOR STARTER

LC-5

TO EMERGENCY LIGHT
SEE



DD-1 VIA
MOTOR STARTER

EXHAUST FAN
1/4 HP, 115V, 1Φ
5.6A, ROOF
MOUNTED

2P30A, 240V
NFS NEMA 4
SSTL

LC-7

DOCUMENT DESTROYER
60HP, 208V, 3Φ, 60HZ,

TO LC-3 VIA
MOTOR STARTER

PANEL "LC"

ENCL. CRT. BRKR, 400A, 3P
600V, NEMA 1 ENCL

FEED CONVEYOR MOTOR
120V, 1Φ, 60HZ

DOCUMENT DESTROYER
MOTOR STARTER
WIRE GUTTER
6" X 6" X 48"

FAN CYCLONE
MOTOR STARTER

ROTARY AIRLOCK
MOTOR STARTER

FEED CONVEYOR
MOTOR STARTER

PWC SKETCH DWG. NO. SK08-94

TITLE: REPLACE INCINERATOR, BLDG. 112
NCTAMS (F), GUAM, M. I.

DRAWN: HAH
PDE: ACD
CHECKED: *[Signature]* 7-28-94
BRANCH MANAGER: *[Signature]* 7-28-94
HEAD, FACILITIES ENG'G.: *[Signature]* 7-28-94



POWER PLAN

E2, E3

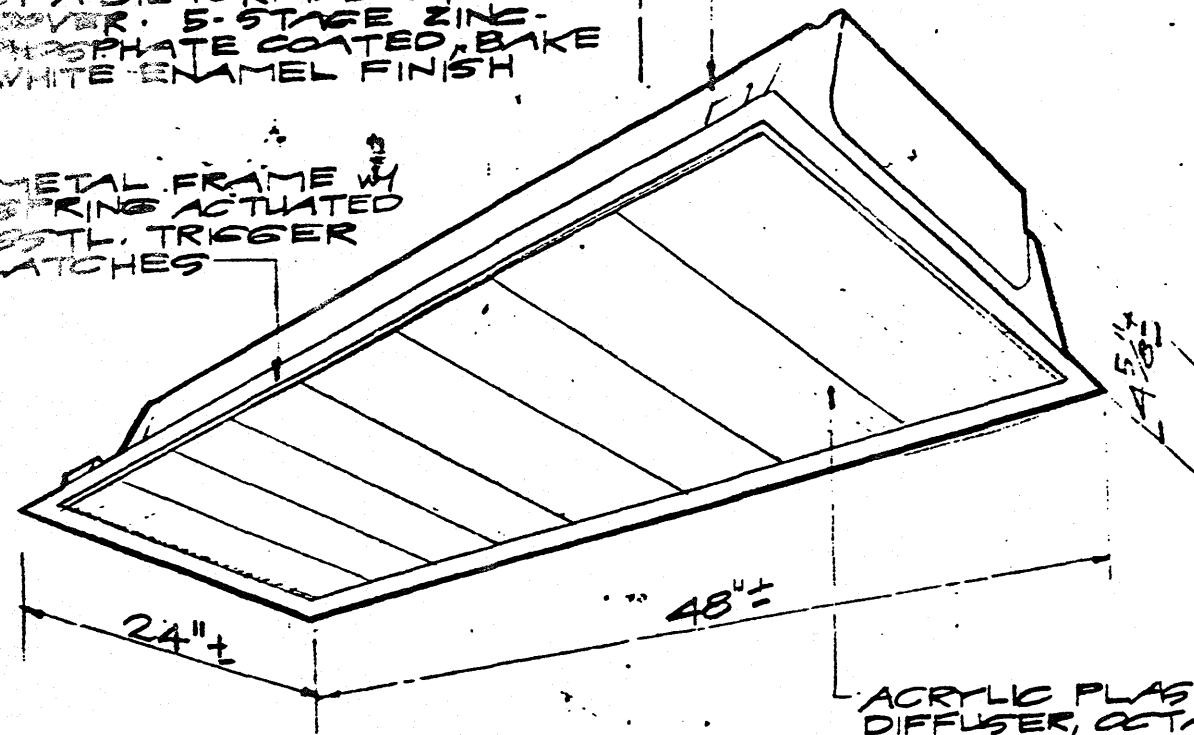
SCALE:

3/8" - 0"

E-4

DIE-FORMED EMBOSSED
STEEL HOUSING W/ BALLIST
COMPARTMENT CLOSED
BY A DIE-FORMED STEEL
COVER. 5-STAGE NICKEL-
PHOSPHATE COATED, BAKE
WHITE ENAMEL FINISH

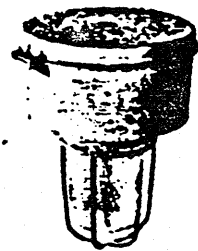
METAL FRAME
SPRINGS ACTUATED
STTL. TRIGGER
LATCHES



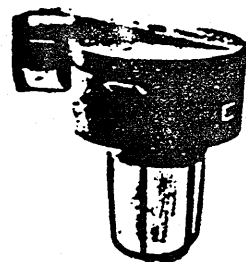
ACRYLIC PLASTIC
DIFFUSER, OCTA-
GONAL PATTERN

TYPE "A"

FLOURESCENT, 2-35 WATTS, 120 VOLTS
HPF, RAPID START, SUSPEND TO CEILING
@ 10 FT. ABOVE FINISH FLOOR



Pendant mount with
globe and guard



Wall mount, through feed,
with globe and guard

TYPE "B"

100 WATTS WITH 120 VOLTS
LAMP HIGH PRESSURE SODIUM

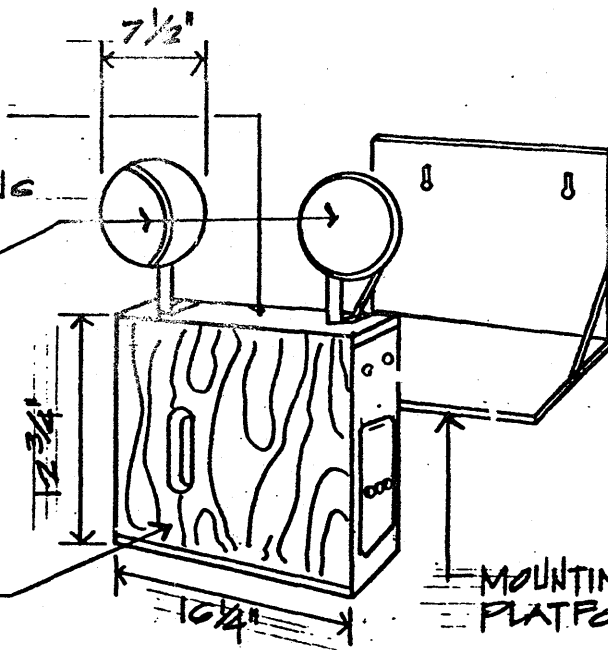
TYPE "C"

100 WATTS WITH 120 VOLTS
LAMP HIGH PRESSURE SODIUM

HEAVY GAUGE STEEL
CASE WITH CORROSION
RESISTING UNDERCOATING

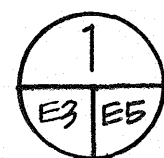
LAMP, PAR 36

WALNUT FRONT FINISH



TYPE "D"

MOUNTING: WALL SURFACE
LAMP: 25 WATTS, PAR 36
BATTERY: 6 VOLTS, NICKEL CADMIUM, 2 HOUR CAPACITY, SEALED
CHARGER: AUTOMATIC SOLID STATE, 2 RATE CHARGER
120 VOLTS, 6 CYCLE AC SOURCE
ACCESSORIES: ELECTROLYTE LEVEL DETECTOR, PILOT LIGHT,
TEST SWITCH



LIGHTING FIXTURE SCHEDULE

NOT

TO

SCALE

PWC SKETCH DWG. NO. SK08-94
TITLE: REPLACE INCINERATOR, BLDG. 112
NCTAMS (F), GUAM, M. I.

DRAWN: HAH
PDE: ACD
CHECKED: *J. Japuin* 7-28-94
BRANCH MANAGER: *UM* 7-28-94
HEAD, FACILITIES ENG'G.: *Baker* 7-18-94