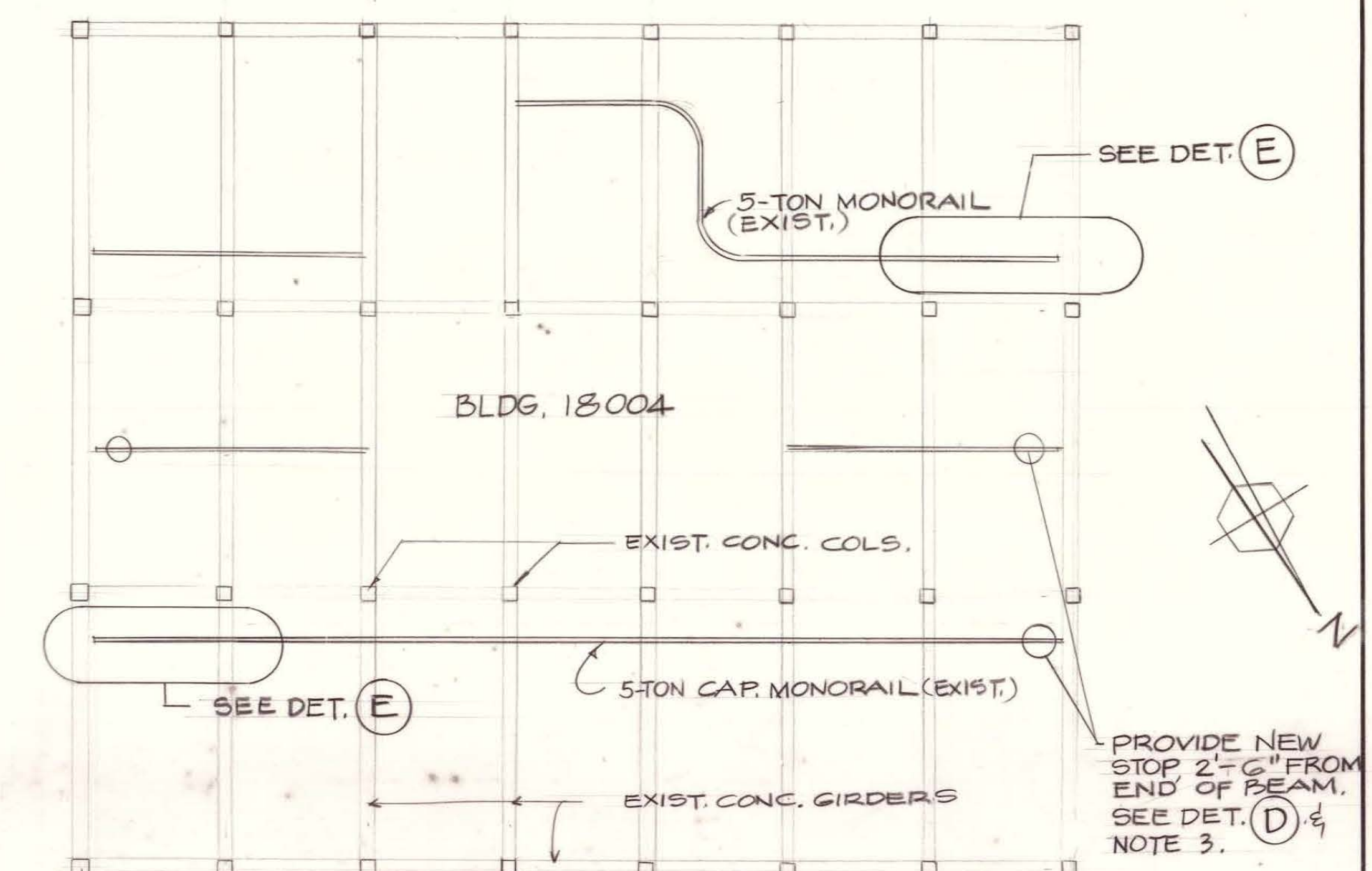
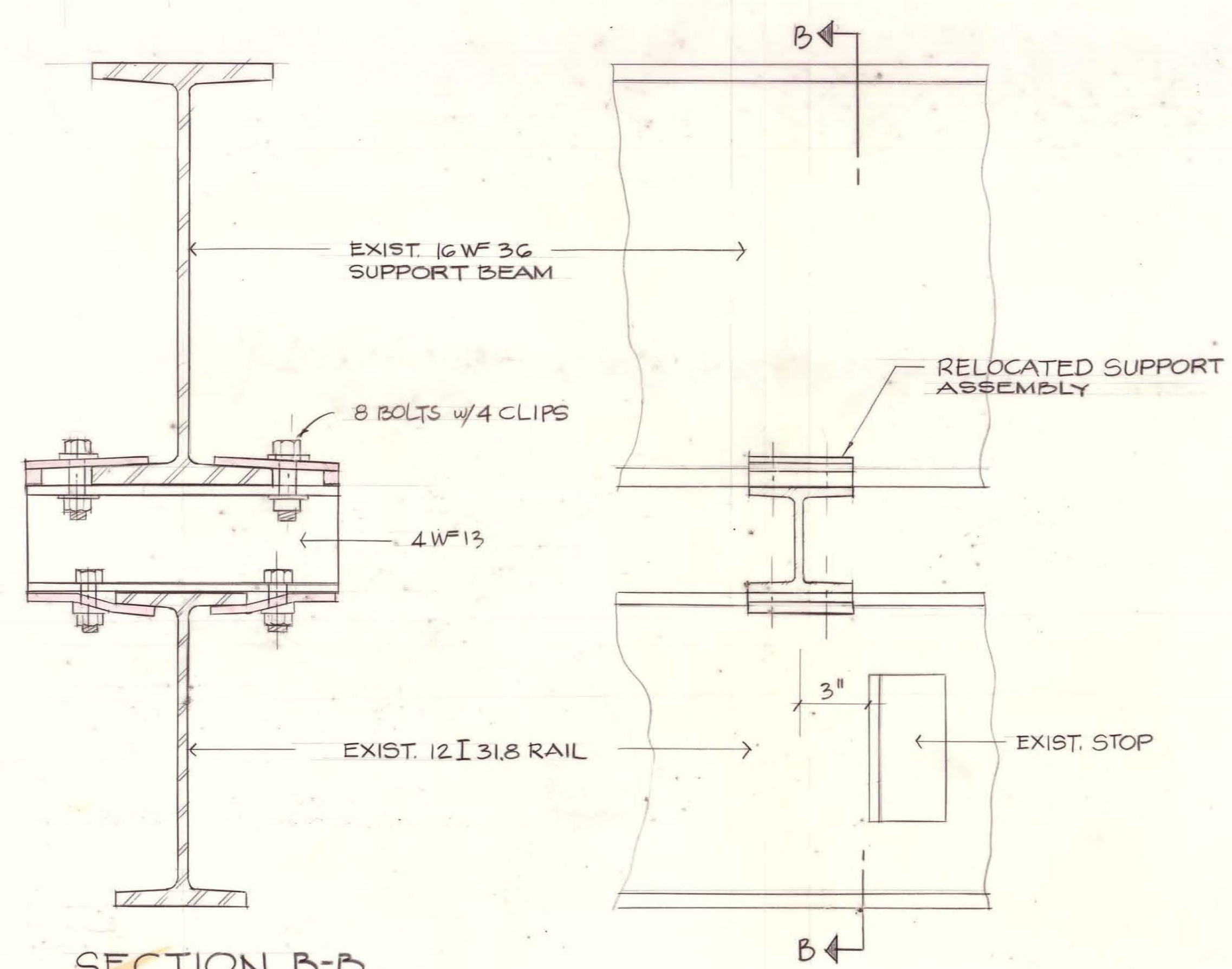


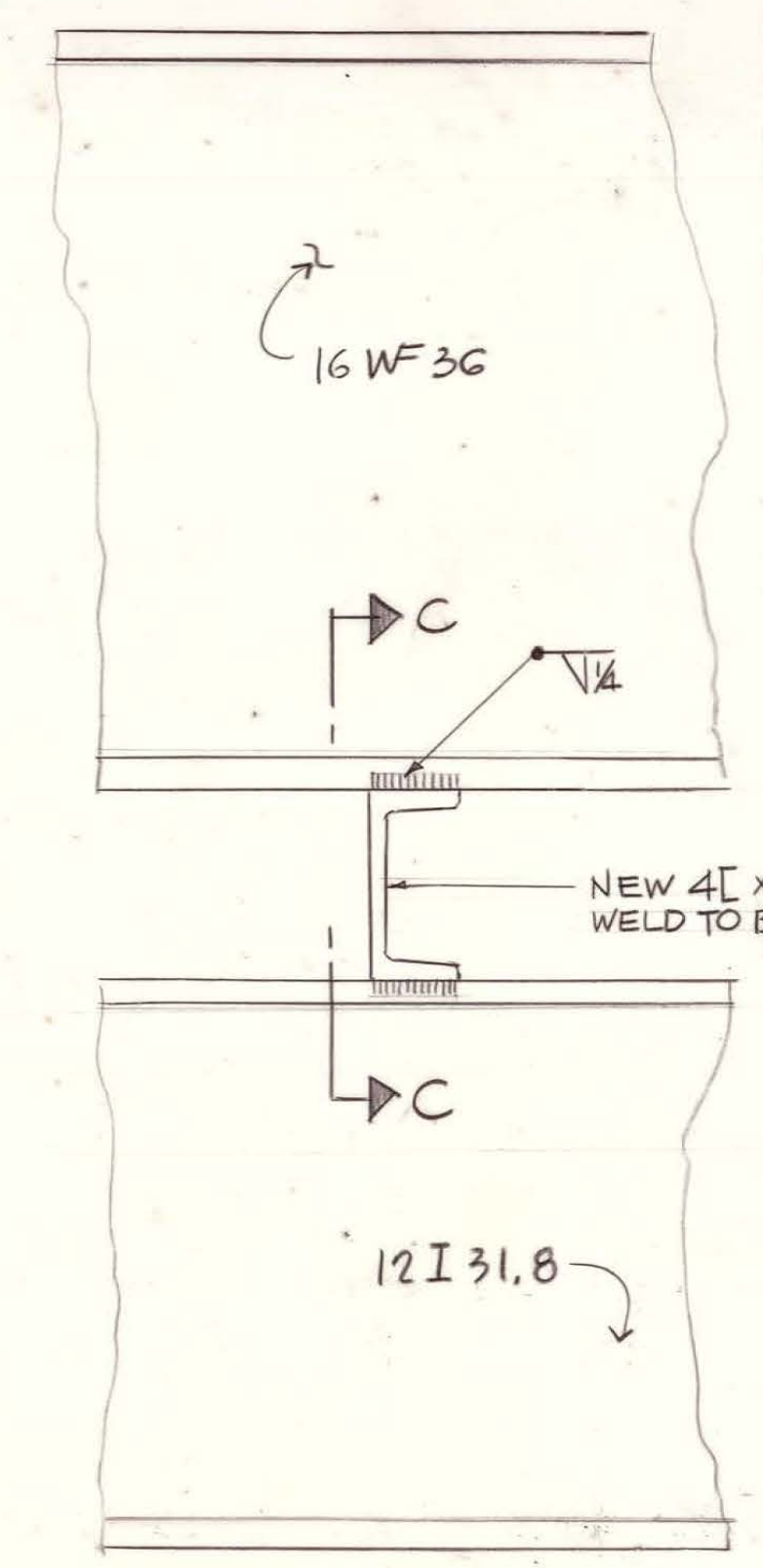
**(E) END-BAY MONORAIL BEAM ALTERATION**



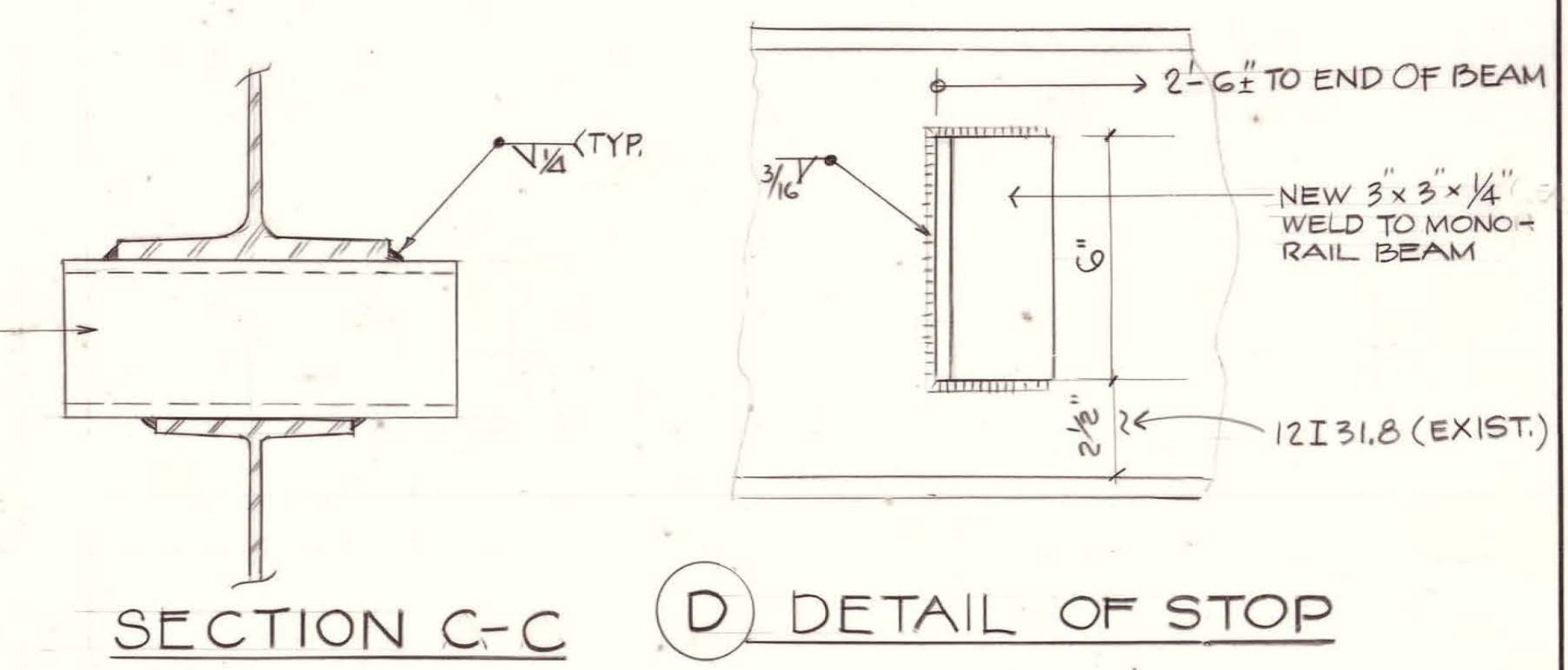
**(A) REFLECTED ROOF PLAN**



**(B) DETAIL SHOWING RELOCATED SUPPORT**



**(C) END SUPPORT DETAIL**



**(D) DETAIL OF STOP**

- NOTES:**
- HOIST CAPACITY — 5 TONS
  - REPAIR ALL DAMAGED PAINT OF BEAMS
  - PROVIDE 4 NEW TROLLEY STOPPER PER DETAIL (D), LOCATION TO BE DESIGNATED BY USING AGENCY.

COORDINATION		REV.	DATE	DESCRIPTION	DRAWN	APPR'D
<b>STRATEGIC AIR COMMAND CIVIL ENGINEERING</b>						
<b>ALTER MONORAIL SUPPORT (END BAYS)</b>						
BLDG. 18004 ANDERSEN AFB GUAM						
SUBMITTED	DESIGNED	CHECKED	SCALE	DRAWING NUMBER	APPROVED	
<i>Shantou Chang</i> Chief, Eng. Des. Section	E. LLAMAS		AS SHOWN	SK-41	<i>Mykel Rios</i> CHIEF, ENG. & ENVIRON. BR	
DRAWN	DATE	PROJECT NUMBER	SHEET		OF	
el	10 JUN 80	W/O 23443	1		1	